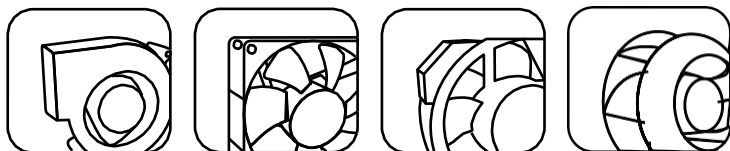


CROWN ELECTRONICS

● DC BLOWER CATALOGUE



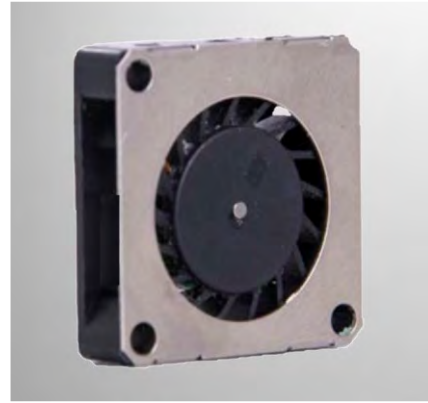
18

BGE Series

Size (尺寸) 18*18*04 mm

General Specifications (一般規格)

Motor : DC Brushless DC motor.	馬達 / 直流單向無刷馬達
Frame : Plastic (94V-0)	材料 / 框 : 塑膠 (94V-0)
Impeller : Plastic (94V-0)	材料 / 葉 : 塑膠 (94V-0)
Bearing : FMB Bearing	軸承 / 液壓軸承
Weight : 1.9 g	重量 / 1.9 克

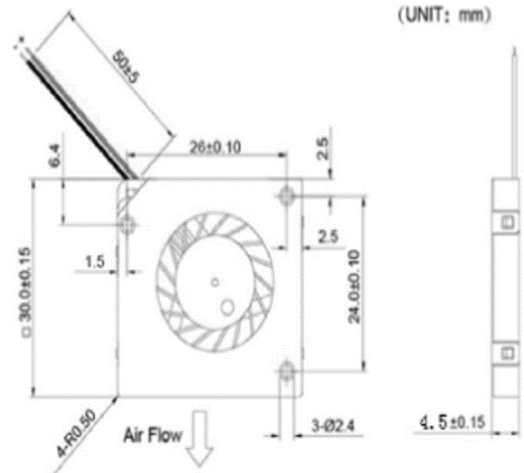
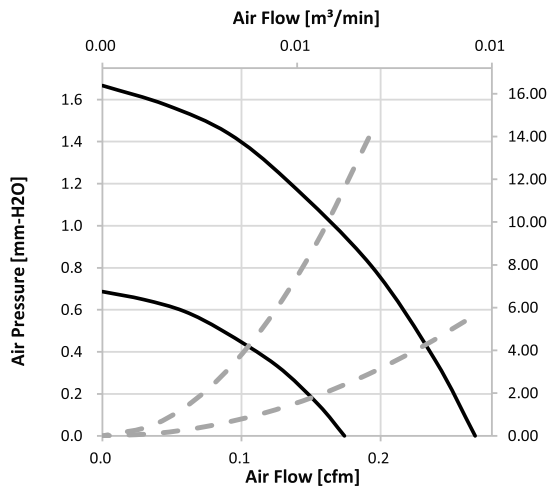


Major Characteristic Parameters (主要參數)

Model 機型	Bearing System 軸承	Rated Voltage 電壓	Operating Range 操作電壓	Rated Current 電流	Rated Speed 轉速	Maximum Air Flow 最大風量		Maximum Static Pressure 最大風壓		Sound Level 噪音	P-Q 曲線
Part NO.	B / F / S	V	V	A	RPM	m3/min	CFM	mm-H2O	In-H2O	dBA	NO.
BGE01804F05H	F	3.3	2.8~3.6	0.04	8000	0.00	0.23	2.74	0.11	15.1	(1)
BGE01804F05H	F	5	4.5~5.5	0.06	12000	0.01	0.33	5.58	0.22	20.4	(1)

*Function type is optional. (其它功能類型是可加選的) *All reading are typical values at rated voltage. (所有讀數均為額定電壓下測試的參數)

* Bearing (軸承) B: Two Ball Bearing (滾珠) F: Fluid Bearing (液壓) S: Sleeve Bearing (合銅)



20

BGE Series

Size (尺寸) 20*20*06

General Specifications (一般規格)

Motor	: DC Brushless DC motor.	馬達 / 直流單向無刷馬達
Frame	: Plastic (94V-0)	材料 / 框 : 塑膠 (94V-0)
Impeller	: Plastic (94V-0)	材料 / 葉 : 塑膠 (94V-0)
Bearing	: FMB Bearing	軸承 / 液壓軸承
Weight	: 4 g	重量 / 4 克



Major Characteristic Parameters (主要參數)

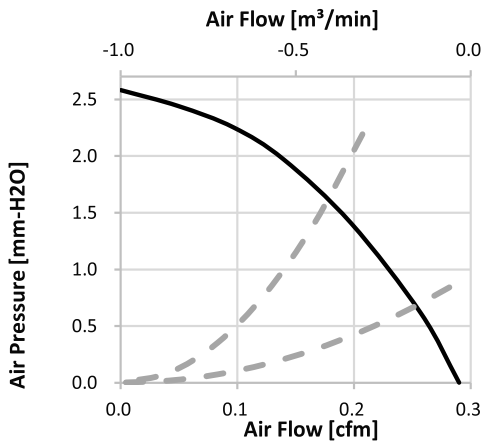
Model 機型	Bearing System 軸承	Rated Voltage 電壓	Operating Range 操作電壓	Rated Current 電流	Rated Speed 轉速	Maximum Air Flow 最大風量		Maximum Static Pressure 最大風壓		Sound Level 噪音	P-Q 曲線
Part NO.	B / F / S	V	V	A	RPM	m3/min	CFM	mm-H2O	In-H2O	dBA	NO.
BGE02006F05H	F	5	4.5~5.5	0.05	12000	0.01	0.29	2.58	0.10	19.0	(1)

*Function type is optional. (其它功能類型是可加選的)

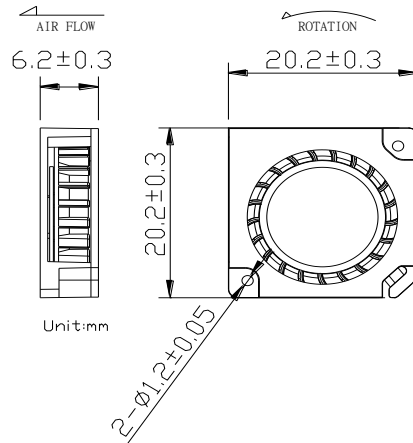
*All reading are typical values at rated voltage. (所有讀數均為額定電壓下測試的參數)

* Bearing (軸承) B: Two Ball Bearing (滾珠) F: Fluid Bearing (液壓) S: Sleeve Bearing (合銅)

*The P-Q NO. is counted from low CFM. (P-Q曲線區分,請從最小風量(1)往大的數)



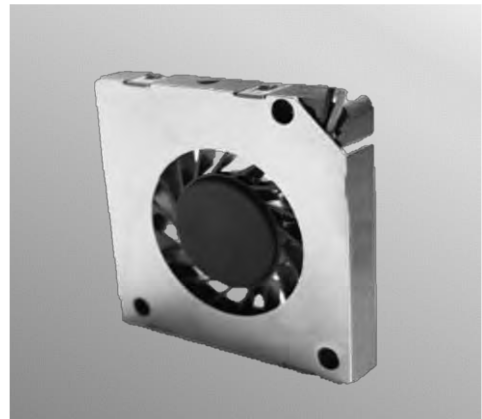
Air Pressure [Pa]



30

BGE Series

Size (尺寸) 30*30*4mm



General Specifications (一般規格)

Motor : DC Brushless DC motor. 馬達 / 直流單向無刷馬達
 Frame : Plastic (94V-0) 材料 / 框 : 塑膠 (94V-0)
 Impeller : Plastic (94V-0) 材料 / 葉 : 塑膠 (94V-0)
 Bearing : FMB Bearing 軸承 / 液壓軸承
 Weight : 5 g 重量 / 5 克

Major Characteristic Parameters (主要參數)

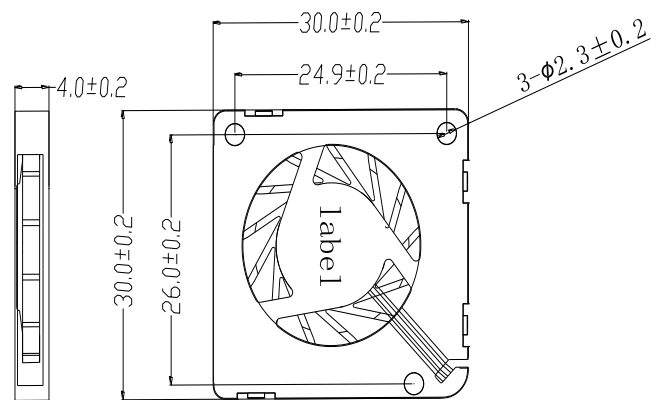
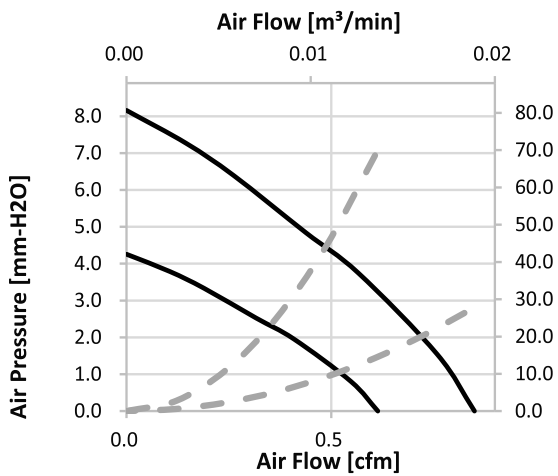
Model 機型	Bearing System 軸承	Rated Voltage 電壓	Operating Range 操作電壓	Rated Current 電流	Rated Speed 轉速	Maximum Air Flow 最大風量		Maximum Static Pressure 最大風壓		Sound Level 噪音	P-Q 曲線
Part NO.	B / F / S	V	V	A	RPM	m3/min	CFM	mm-H2O	In-H2O	dBA	NO.
BGE03004_05L	F	5	4.5~5.5	0.05	6500	0.02	0.61	4.26	0.17	18.9	(5)
BGE03004_05M	F	5	4.5~5.5	0.10	9000	0.02	0.85	8.16	0.32	26.0	(4)

*Function type is optional. (其它功能類型是可加選的)

*All reading are typical values at rated voltage. (所有讀數均為額定電壓下測試的參數)

* Bearing (軸承) - B: Two Ball Bearing (滾珠) F: Fluid Bearing (液壓) S: Sleeve Bearing (合銅)

Specification is subject to change for upgrading without notice



30

BGE Series

Size (尺寸) 30*30*10

General Specifications (一般規格)

Motor : DC Brushless DC motor.	馬達 / 直流單向無刷馬達
Frame : Plastic (94V-0)	材料 / 框 : 塑膠 (94V-0)
Impeller : Plastic (94V-0)	材料 / 葉 : 塑膠 (94V-0)
Bearing : Ball;FMB Bearing	軸承 / 滾珠;液壓軸承
Weight : 10 g	重量 / 10 克

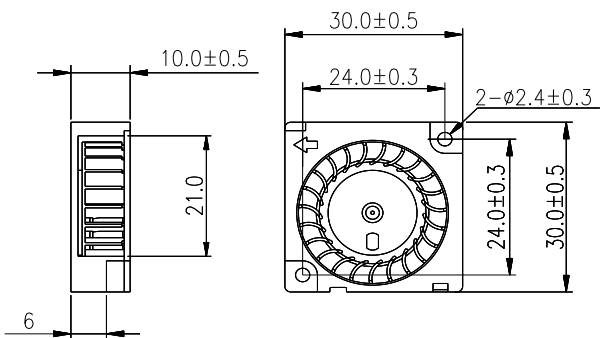
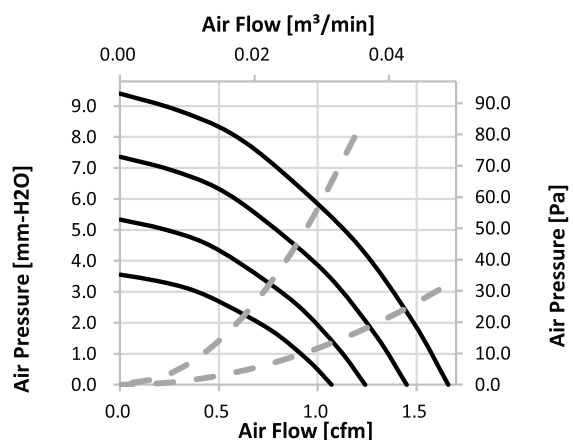


Major Characteristic Parameters (主要參數)

Model 機型	Bearing System 軸承	Rated Voltage 電壓	Operating Range 操作電壓	Rated Current 電流	Rated Speed 轉速	Maximum Air Flow 最大風量		Maximum Static Pressure 最大風壓		Sound Level 噪音	P-Q 曲線
						m3/min	CFM	mm-H2O	In-H2O		
Part NO.	B / F / S	V	V	A	RPM					dBA	NO.
BGE03010_05L	B F	5	4.0-5.5	0.06	5500	0.03	1.07	3.56	0.14	24.0	(4)
BGE03010_12L	B F	12	7-13.2	0.04	5500	0.03	1.07	3.56	0.14	24.0	(4)
BGE03010_05M	B F	5	4.0-5.5	0.08	6500	0.04	1.24	5.33	0.21	26.0	(3)
BGE03010_12M	B F	12	7-13.2	0.05	6500	0.04	1.24	5.33	0.21	26.0	(3)
BGE03010_05H	B F	5	4.0-5.5	0.11	7500	0.04	1.45	7.37	0.29	29.0	(2)
BGE03010_12H	B F	12	7-13.2	0.07	7500	0.04	1.45	7.37	0.29	29.0	(2)
BGE03010_05U	B F	5	4.0-5.5	0.15	8500	0.05	1.66	9.40	0.37	31.0	(1)
BGE03010_12U	B F	12	7-13.2	0.08	8500	0.05	1.66	9.40	0.37	31.0	(1)

*Function type is optional. (其它功能類型是可加選的) *All reading are typical values at rated voltage. (所有讀數均為額定電壓下測試的參數)

* Bearing (軸承) - B: Two Ball Bearing (滾珠) F: Fluid Bearing (液壓) S: Sleeve Bearing (合銅) Specification is subject to change for upgrading without notice



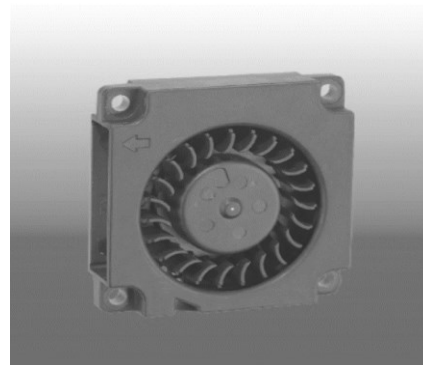
35

BGE Series

Size (尺寸) 35*35*10 mm

General Specifications (一般規格)

Motor : DC Brushless DC motor.	馬達 / 直流單向無刷馬達
Frame : Plastic (94V-0)	材料 / 框 : 塑膠 (94V-0)
Impeller : Plastic (94V-0)	材料 / 葉 : 塑膠 (94V-0)
Bearing : Ball;FMB Bearing	軸承 / 滾珠;液壓軸承
Weight : 11 g	重量 / 11 克

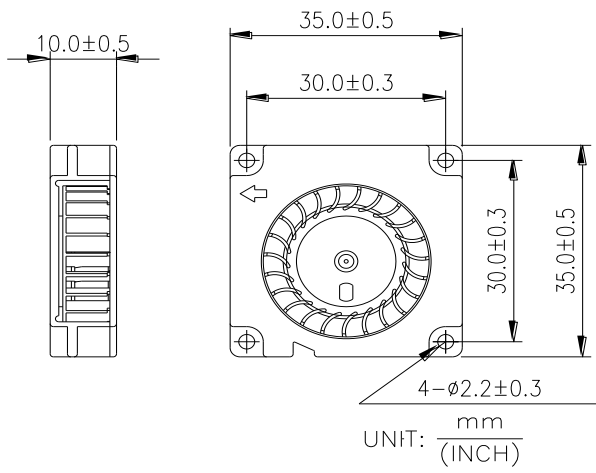
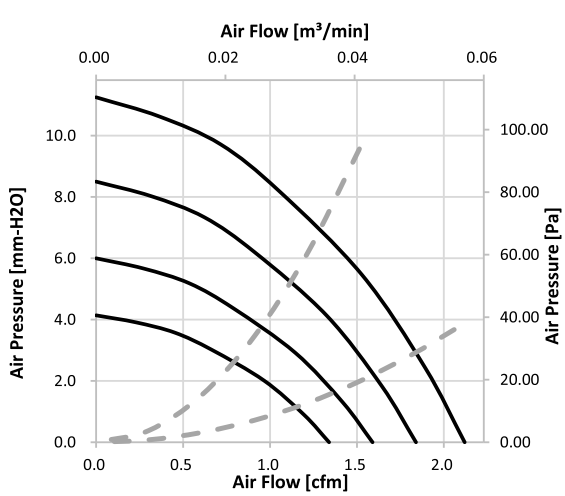


Major Characteristic Parameters (主要參數)

Model 機型	Bearing System 軸承	Rated Voltage 電壓	Operating Range 操作電壓	Rated Current 電流	Rated Speed 轉速	Maximum Air Flow 最大風量		Maximum Static Pressure 最大風壓		Sound Level 噪音	P-Q P-Q曲線
Part NO.	B / F / S	V	V	A	RPM	m3/min	CFM	mm-H2O	In-H2O	dBA	NO.
BGE03510B05L	B F	5	4.0-6.0	0.05	5500	0.04	1.34	4.14	0.16	24.0	(4)
BGE03510B05M	B F	5	4.0-6.0	0.08	6500	0.05	1.59	6.00	0.24	26.0	(3)
BGE03510B05H	B F	5	4.0-6.0	0.11	7500	0.05	1.84	8.50	0.34	29.0	(2)
BGE03510B05U	B F	5	4.0-6.0	0.19	8500	0.06	2.12	11.25	0.44	31.0	(1)
BGE03510B12L	B F	12	7.0-13.2	0.04	5500	0.04	1.34	4.14	0.16	24.0	(4)
BGE03510B12M	B F	12	7.0-13.2	0.05	6500	0.05	1.59	6.00	0.24	26.0	(3)
BGE03510B12H	B F	12	7.0-13.2	0.07	7500	0.05	1.84	8.50	0.34	29.0	(2)
BGE03510B12U	B F	12	7.0-13.2	0.08	8500	0.06	2.12	11.25	0.44	31.0	(1)

*Function type is optional. (其它功能類型是可加選的) *All reading are typical values at rated voltage. (所有讀數均為額定電壓下測試的參數)

* Bearing (軸承) B: Two Ball Bearing (滾珠) F: Fluid Bearing (液壓) S: Sleeve Bearing (合銅)



40

BGE Series

Size (尺寸) 40*40*10

General Specifications (一般規格)

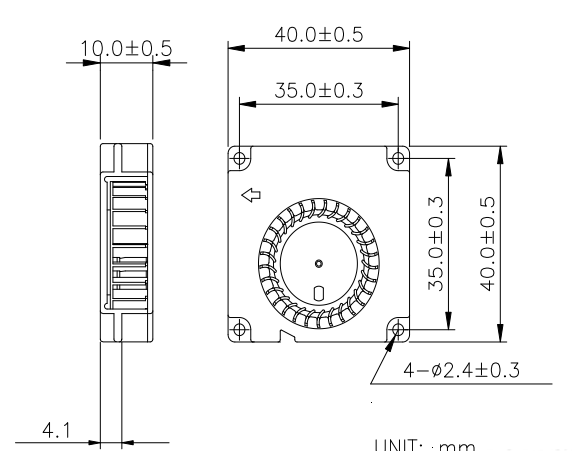
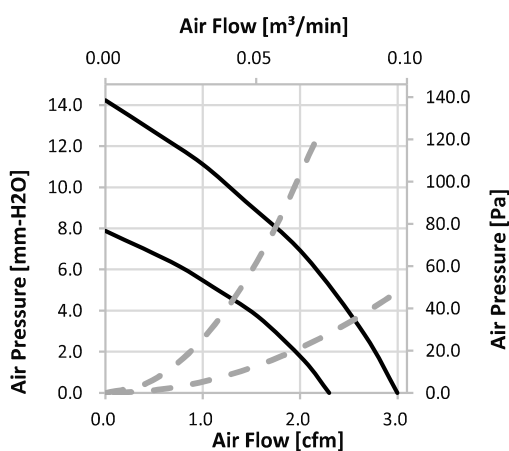
Motor	: DC Brushless DC motor.	馬達 / 直流單向無刷馬達
Frame	: Plastic (94V-0)	材料 / 框: 塑膠 (94V-0)
Impeller	: Plastic (94V-0)	材料 / 葉: 塑膠 (94V-0)
Bearing	: Ball Bearing	軸承 / 滾珠軸承
Weight	: 12 g	重量 / 12 克



Major Characteristic Parameters (主要參數)

Model 機型	Bearing System 軸承	Rated Voltage 電壓	Operating Range 操作電壓	Rated Current 電流	Rated Speed 轉速	Maximum Air Flow 最大風量		Maximum Static Pressure 最大風壓		Sound Level 噪音	P-Q 曲線
						m3/min	CFM	mm-H2O	In-H2O		
Part NO.	B / F / S	V	V	A	RPM					dBA	NO.
BGE04010B05M	B	5	4.0~5.5	0.08	6500	0.07	2.30	7.87	0.31	29.5	(3)
BGE04010B05H	B	5	4.0~5.5	0.16	8500	0.08	3.00	14.22	0.56	34.5	(2)

*Function type is optional. (其它功能類型是可加選的) *All reading are typical values at rated voltage. (所有讀數均為額定電壓下測試的參數)
 * Bearing (軸承) - B: Two Ball Bearing (滾珠) F: Fluid Bearing (液壓) S: Sleeve Bearing (合銅) Specification is subject to change for upgrading without notice

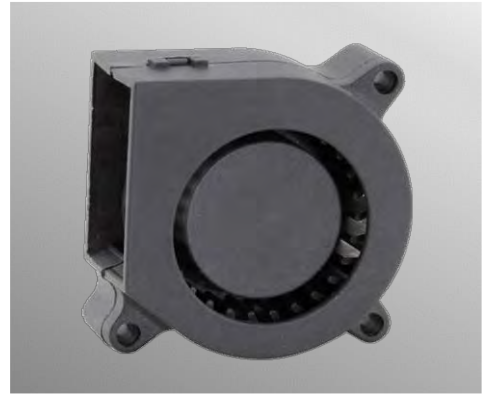


40

BGE Series Size (尺寸) 40*40*20

General Specifications (一般規格)

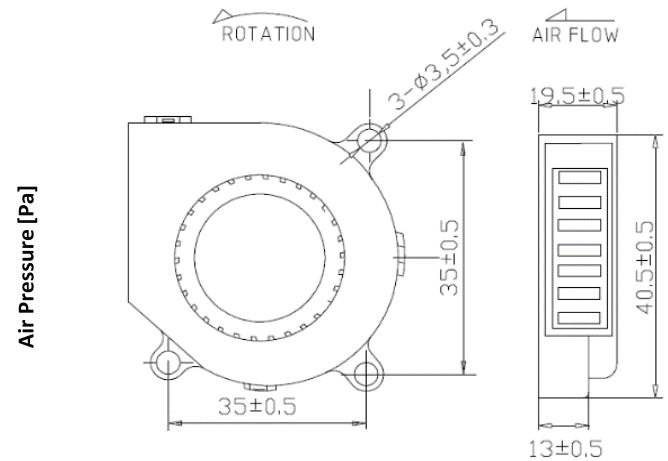
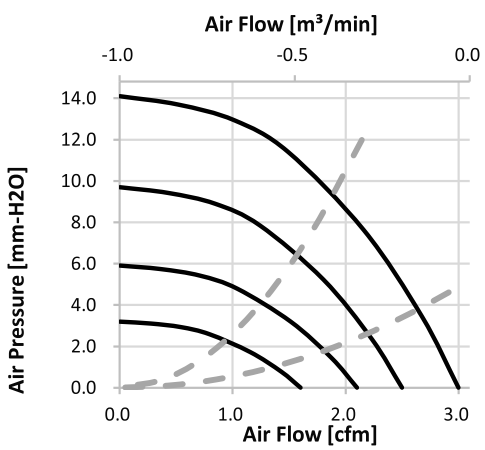
Motor : DC Brushless DC motor.	馬達 / 直流單向無刷馬達
Frame : Plastic (94V-0)	材料 / 框 : 塑膠 (94V-0)
Impeller : Plastic (94V-0)	材料 / 葉 : 塑膠 (94V-0)
Bearing : Ball; Sleeve Bearing	軸承 / 滾珠; 含油軸承
Weight : 26 g	重量 / 26 克



Major Characteristic Parameters (主要參數)

Model 機型	Bearing System 軸承	Rated Voltage 電壓	Operating Range 操作電壓	Rated Current 電流	Rated Speed 轉速	Maximum Air Flow 最大風量		Maximum Static Pressure 最大風壓		Sound Level 噪音	P-Q 曲線
Part NO.	B / F / S	V	V	A	RPM	m3/min	CFM	mm-H2O	in-H2O	dBA	NO.
BGE04020_05L	B S	5	4.5~5.5	0.16	3500	0.05	1.60	3.20	0.13	27.0	(4)
BGE04020_12L	B S	12	7.0~13.2	0.08	3500	0.05	1.60	3.20	0.13	27.0	(4)
BGE04020_05M	B S	5	4.5~5.5	0.20	4500	0.06	2.10	5.90	0.23	33.0	(3)
BGE04020_12M	B S	12	7.0~13.2	0.10	4500	0.06	2.10	5.90	0.23	33.0	(3)
BGE04020_05H	B S	5	4.5~5.5	0.25	5500	0.07	2.50	9.70	0.38	37.0	(2)
BGE04020_12H	B S	12	7.0~13.2	0.15	5500	0.07	2.50	9.70	0.38	37.0	(2)
BGE04020_12U	B S	12	7.0~13.2	0.18	6500	0.08	3.00	14.10	0.56	45.0	(1)

*Function type is optional. (其它功能類型是可加選的) *All reading are typical values at rated voltage. (所有讀數均為額定電壓下測試的參數)
 * Bearing (軸承) B: Two Ball Bearing (滾珠) F: Fluid Bearing (液壓) S: Sleeve Bearing (含銅) *The P-Q NO. is counted from low CFM. (P-Q曲線區分,請從最小風量(1)往大的數)



45

BGE Series

Size (尺寸) 45*45*10

General Specifications (一般規格)

Motor : DC Brushless DC motor.	馬達 / 直流單向無刷馬達
Frame : Plastic (94V-0)	材料 / 框 : 塑膠 (94V-0)
Impeller : Plastic (94V-0)	材料 / 葉 : 塑膠 (94V-0)
Bearing : Ball;FMB Bearing	軸承 / 滾珠;液壓軸承
Weight : 13 g	重量 / 13 克



Major Characteristic Parameters (主要參數)

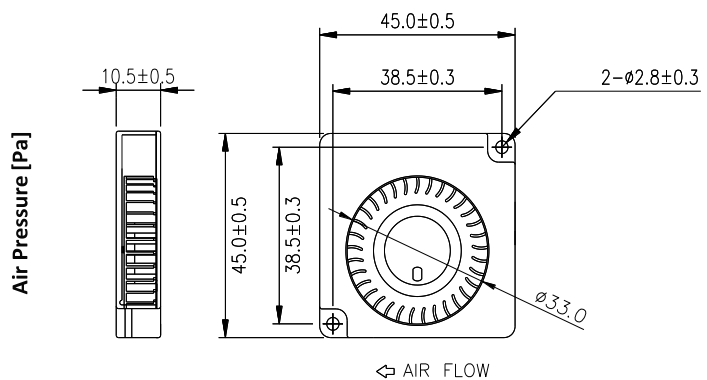
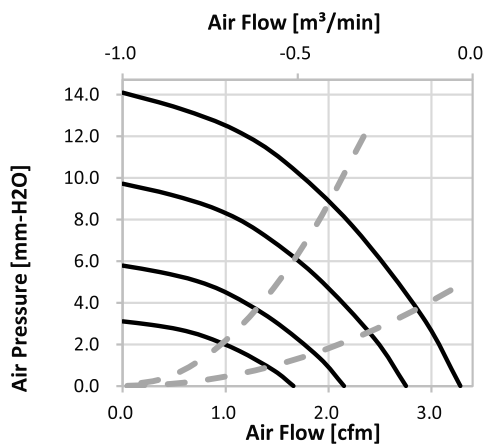
Model 機型	Bearing System 軸承	Rated Voltage 電壓	Operating Range 操作電壓	Rated Current 電流	Rated Speed 轉速	Maximum Air Flow 最大風量		Maximum Static Pressure 最大風壓		Sound Level 噪音	P-Q 曲線
Part NO.	B / F / S	V	V	A	RPM	m3/min	CFM	mm-H2O	In-H2O	dBA	NO.
BGE04510_05L	B F	5	4.5~5.5	0.07	3500	0.05	1.66	3.11	0.85	21.5	(4)
BGE04510_12L	B F	12	7.0~13.2	0.05	3500	0.05	1.66	3.11	0.85	21.5	(4)
BGE04510_05M	B F	5	4.5~5.5	0.11	4500	0.06	2.15	5.78	1.06	27.0	(3)
BGE04510_12M	B F	12	7.0~13.2	0.06	4500	0.06	2.15	5.78	1.06	27.0	(3)
BGE04510_05H	B F	5	4.5~5.5	0.17	5500	0.08	2.75	9.72	1.20	30.5	(2)
BGE04510_12H	B F	12	7.0~13.2	0.09	5500	0.08	2.75	9.72	1.20	30.5	(2)
BGE04510_05U	B F	5	4.5~5.5	0.24	6500	0.09	3.28	14.09	1.40	35.5	(1)
BGE04510_12U	B F	12	7.0~13.2	0.14	6500	0.09	3.28	14.09	1.40	35.5	(1)

*Function type is optional. (其它功能類型是可加選的)

*All reading are typical values at rated voltage. (所有讀數均為額定電壓下測試的參數)

* Bearing (軸承) B: Two Ball Bearing (滾珠) F: Fluid Bearing (液壓) S: Sleeve Bearing (合銅)

*The P-Q NO. is counted from low CFM.(P-Q曲線區分,請從最小風量(1)往大的數)



50

BGE Series

Size (尺寸) 50*50*15

General Specifications (一般規格)

Motor : DC Brushless DC motor.	馬達 / 直流單向無刷馬達
Frame : Plastic (94V-0)	材料 / 框 : 塑膠 (94V-0)
Impeller : Plastic (94V-0)	材料 / 葉 : 塑膠 (94V-0)
Bearing : Ball; Sleeve Bearing	軸承 / 滾珠; 含油軸承
Weight : 26 g	重量 / 26 克



Major Characteristic Parameters (主要參數)

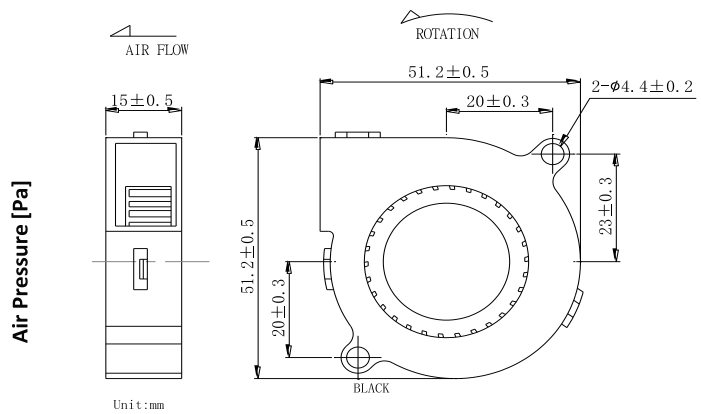
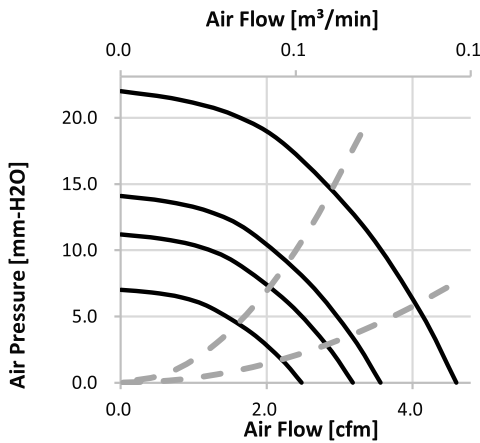
Model 機型	Bearing System 軸承	Rated Voltage 電壓	Operating Range 操作電壓	Rated Current 電流	Rated Speed 轉速	Maximum Air Flow 最大風量		Maximum Static Pressure 最大風壓		Sound Level 噪音	P-Q 曲線
Part NO.	B / F / S	V	V	A	RPM	m3/min	CFM	mm-H2O	In-H2O	dBA	NO.
BGE05015_05L	B S	5	4.5~5.5	0.09	3500	0.07	2.48	7.00	0.28	27.0	(4)
BGE05015_12L	B S	12	7.0~13.2	0.06	3500	0.07	2.48	7.00	0.28	27.0	(4)
BGE05015_05M	B S	5	4.5~5.5	0.12	4500	0.09	3.18	11.20	0.44	32.5	(3)
BGE05015_12M	B S	12	7.0~13.2	0.07	4500	0.09	3.18	11.20	0.44	32.5	(3)
BGE05015_24M	B S	24	14.0~26.2	0.05	4500	0.09	3.18	11.20	0.44	32.5	(3)
BGE05015_05H	B S	5	4.5~5.5	0.18	5500	0.10	3.56	14.10	0.56	37.2	(2)
BGE05015_12H	B S	12	7.0~13.2	0.09	5500	0.10	3.56	14.10	0.56	37.2	(2)
BGE05015_24H	B S	24	14.0~26.2	0.07	5500	0.10	3.56	14.10	0.56	37.2	(2)
BGE05015_12U	B S	12	7.0~13.2	0.15	6500	0.13	4.60	22.00	0.87	45.3	(1)
BGE05015_24U	B S	24	14.0~26.2	0.12	6500	0.13	4.60	22.00	0.87	45.3	(1)

*Function type is optional. (其它功能類型是可加選的)

*All reading are typical values at rated voltage. (所有讀數均為額定電壓下測試的參數)

* Bearing (軸承) B: Two Ball Bearing (滾珠) F: Fluid Bearing (液壓) S: Sleeve Bearing (含銅)

*The P-Q NO. is counted from low CFM. (P-Q曲線區分, 請從最小風量(1)往大的數)



www.crownelectronics.com.tw



50

BGE Series Size (尺寸) 50*50*10

General Specifications (一般規格)

Motor : DC Brushless DC motor.	馬達 / 直流單向無刷馬達
Frame : Plastic (94V-0)	材料 / 框 : 塑膠 (94V-0)
Impeller : Plastic (94V-0)	材料 / 葉 : 塑膠 (94V-0)
Bearing : Sleeve Bearing	軸承 / 含油軸承
Weight : 10 g	重量 / 10 克



Major Characteristic Parameters (主要參數)

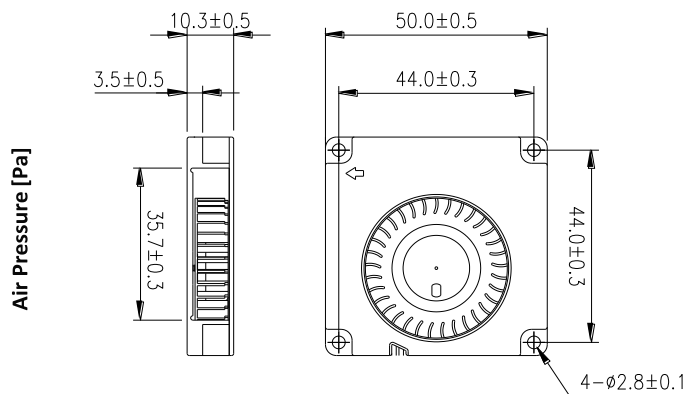
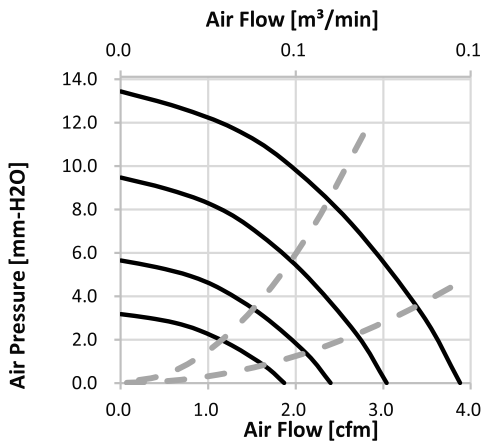
Model 機型	Bearing System 軸承	Rated Voltage 電壓	Operating Range 操作電壓	Rated Current 電流	Rated Speed 轉速	Maximum Air Flow 最大風量		Maximum Static Pressure 最大風壓		Sound Level 噪音	P-Q 曲線
Part NO.	B / F / S	V	V	A	RPM	m3/min	CFM	mm-H2O	In-H2O	dBA	NO.
BGE05010_05L	F B	5	4.5~5.5	0.07	3500	0.05	1.87	3.18	0.13	22.5	(4)
BGE05010_12L	F B	12	7.0~13.2	0.05	3500	0.05	1.87	3.18	0.13	22.5	(4)
BGE05010_05M	F B	5	4.5~5.5	0.11	4500	0.07	2.40	5.64	0.22	28.0	(3)
BGE05010_12M	F B	12	7.0~13.2	0.07	4500	0.07	2.40	5.64	0.22	28.0	(3)
BGE05010_05H	F B	5	4.5~5.5	0.18	5500	0.09	3.04	9.47	0.37	32.5	(2)
BGE05010_12H	F B	12	7.0~13.2	0.09	5500	0.09	3.04	9.47	0.37	32.5	(2)
BGE05010_12U	F B	12	7.0~13.2	0.14	6500	0.11	3.88	13.43	0.53	37.5	(1)

*Function type is optional. (其它功能類型是可加選的)

*All reading are typical values at rated voltage. (所有讀數均為額定電壓下測試的參數)

* Bearing (軸承) B: Two Ball Bearing (滾珠) F: Fluid Bearing (液壓) S: Sleeve Bearing (合銅)

*The P-Q NO. is counted from low CFM.(P-Q曲線區分,請從最小風量(1)往大的數)



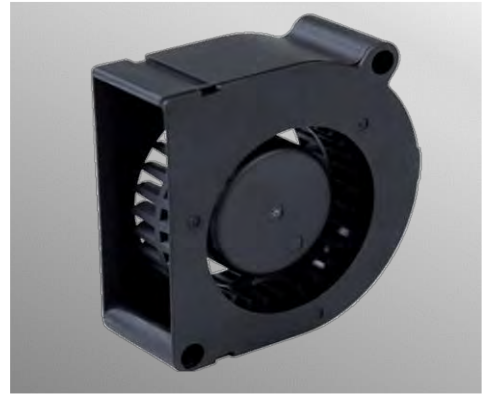
50

BGS Series

Size (尺寸) 50*50*20

General Specifications (一般規格)

Motor : DC Brushless DC motor.	馬達 / 直流單向無刷馬達
Frame : Plastic (94V-0)	材料 / 框 : 塑膠 (94V-0)
Impeller : Plastic (94V-0)	材料 / 葉 : 塑膠 (94V-0)
Bearing : Ball; Sleeve Bearing	軸承 / 滾珠; 含油軸承
Weight : 34 g	重量 / 34 克



Major Characteristic Parameters (主要參數)

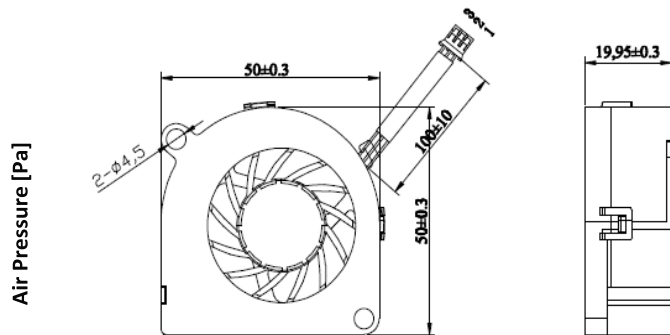
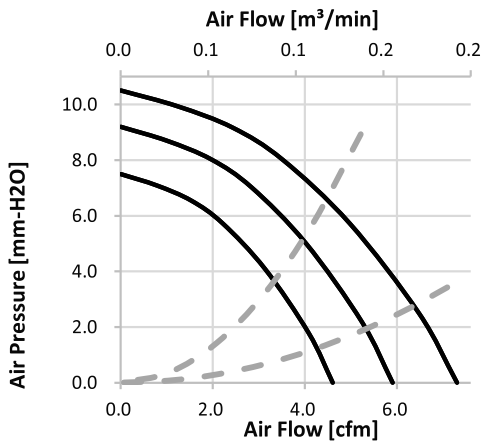
Model 機型	Bearing System 軸承	Rated Voltage 電壓	Operating Range 操作電壓	Rated Current 電流	Rated Speed 轉速	Maximum Air Flow 最大風量		Maximum Static Pressure 最大風壓		Sound Level 噪音	P-Q 曲線
Part NO.	B / F / S	V	V	A	RPM	m3/min	CFM	mm-H2O	In-H2O	dBA	NO.
BGS05020_05I	B S	5	4.5-5.0	0.21	3800	0.13	4.60	7.50	0.30	30.5	(6)
BGS05020_05J	B S	5	4.5-5.0	0.26	4400	0.17	5.90	9.20	0.36	32.3	(5)
BGS05020_05L	B S	5	4.5-5.0	0.30	5000	0.21	7.30	10.50	0.41	33.5	(4)
BGS05020_05M	B S	5	4.5-5.0	0.21	3800	0.13	4.60	7.50	0.30	30.5	(3)
BGS05020_05H	B S	5	4.5-5.0	0.26	4400	0.17	5.90	9.20	0.36	32.3	(2)
BGS05020_05U	B S	5	4.5-5.0	0.30	5000	0.21	7.30	10.50	0.41	33.5	(1)
BGS05020_12I	B S	12	7.0-13.2	0.13	3800	0.13	4.60	7.50	0.30	30.5	(6)
BGS05020_12J	B S	12	7.0-13.2	0.15	4400	0.17	5.90	9.20	0.36	32.3	(5)
BGS05020_12L	B S	12	7.0-13.2	0.20	5000	0.21	7.30	10.50	0.41	33.5	(4)
BGS05020_12M	B S	12	7.0-13.2	0.13	3800	0.13	4.60	7.50	0.30	30.5	(3)
BGS05020_12H	B S	12	7.0-13.2	0.15	4400	0.17	5.90	9.20	0.36	32.3	(2)
BGS05020_12U	B S	12	7.0-13.2	0.20	5000	0.21	7.30	10.50	0.41	33.5	(1)

*Function type is optional. (其它功能類型是可加選的)

*All reading are typical values at rated voltage. (所有讀數均為額定電壓下測試的參數)

* Bearing (軸承) B: Two Ball Bearing (滾珠) F: Fluid Bearing (液壓) S: Sleeve Bearing (含銅)

*The P-Q NO. is counted from low CFM. (P-Q曲線區分,請從最小風量(1)往大的數)



www.crownelectronics.com.tw



50

BGE Series

Size (尺寸) 50*25 mm

■ General Specifications (一般規格)

Motor : DC Brushless DC motor.	馬達 / 直流單向無刷馬達
Frame : Plastic (94V-0)	材料 / 框: 塑膠 (94V-0)
Impeller : Plastic (94V-0)	材料 / 葉: 塑膠 (94V-0)
Bearing : Sleeve Bearing	軸承 / 含油軸承
Weight : 85 g	重量 / 85 克

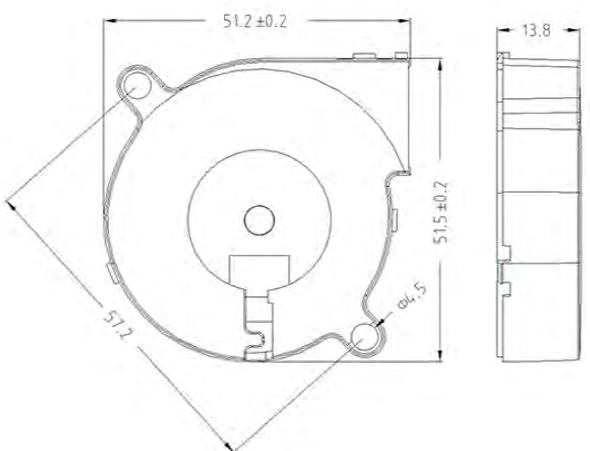
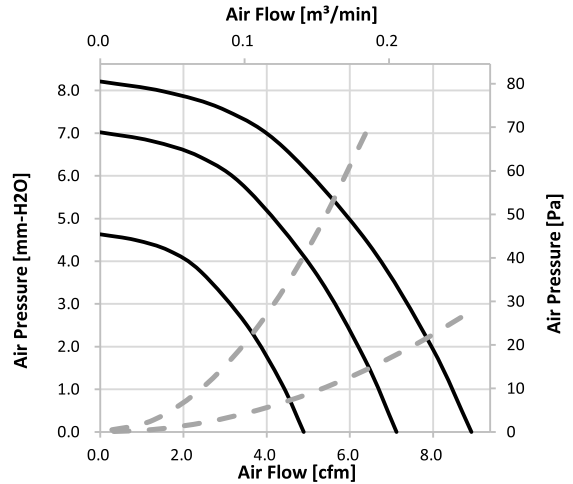


■ Major Characteristic Parameters (主要參數)

Model 機型	Bearing System 軸承	Rated Voltage 電壓	Operating Range 操作電壓	Rated Current 電流	Rated Speed 轉速	Maximum Air Flow 最大風量		Maximum Static Pressure 最大風壓		Sound Level 噪音	P-Q P-Q曲線
Part NO.	B / F / S	V	V	A	RPM	m3/min	CFM	mm-H2O	In-H2O	dBA	NO.
BGE05025_05L	S	5	4.5~5.0	0.12	2500	0.14	4.89	4.63	0.18	20.2	(3)
BGE05025_05M	S	5	4.5~5.0	0.17	3500	0.20	7.12	7.02	0.28	29.6	(2)
BGE05025_05H	S	5	4.5~5.0	0.20	4000	0.25	8.92	8.21	0.32	33.6	(1)
BGE05025_12L	S	12	7~13.2	0.07	2500	0.14	4.89	4.63	0.18	20.2	(3)
BGE05025_12M	S	12	7~13.2	0.10	3500	0.20	7.12	7.02	0.28	29.6	(2)
BGE05025_12H	S	12	7~13.2	0.13	4000	0.25	8.92	4.63	0.18	33.6	(1)
BGE05025_24L	S	24	14~26.4	0.06	2500	0.14	4.89	7.02	0.28	20.2	(3)
BGE05025_24M	S	24	14~26.4	0.08	3500	0.20	7.12	8.21	0.32	29.6	(2)
BGE05025_24H	S	24	14~26.4	0.09	4000	0.25	8.92	8.21	0.32	33.6	(1)

*Function type is optional. (其它功能類型是可加選的) *All reading are typical values at rated voltage. (所有讀數均為額定電壓下測試的參數)

* Bearing (軸承) B: Two Ball Bearing (滾珠) F: Fluid Bearing (液壓) S: Sleeve Bearing (合銅)



55

BGE Series

Size (尺寸) 55*50*05 mm



General Specifications (一般規格)

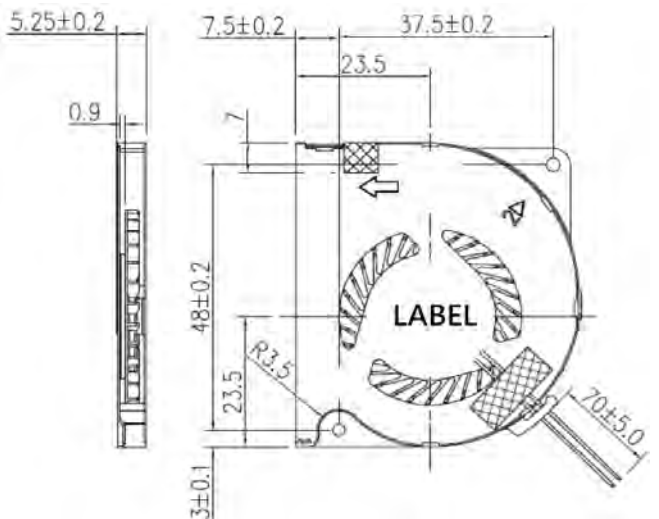
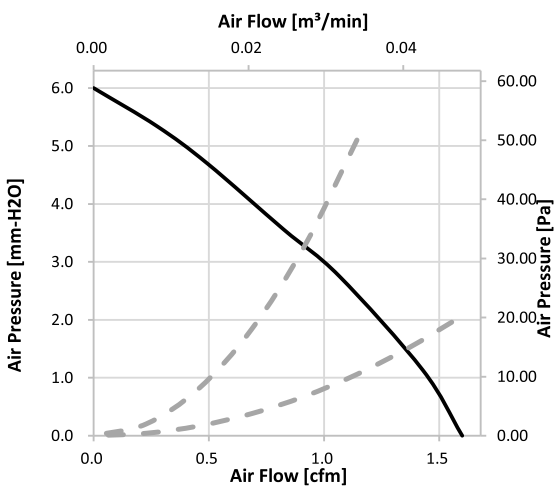
Motor : DC Brushless DC motor.	馬達 / 直流單向無刷馬達
Frame : Plastic, Cover : SPCC	材料 / 框 : 塑膠 (94V-0), 蓋 : SPCC
Impeller : Plastic (94V-0)	材料 / 葉 : 塑膠 (94V-0)
Bearing : FMB Bearing	軸承 / 液壓軸承
Weight : 17 g	重量 / 17 克

Major Characteristic Parameters (主要參數)

Model 機型	Bearing System 軸承	Rated Voltage 電壓	Operating Range 操作電壓	Rated Current 電流	Rated Speed 轉速	Maximum Air Flow 最大風量		Maximum Static Pressure 最大風壓		Sound Level 噪音	P-Q P-Q曲線
Part NO.	B / F / S	V	V	A	RPM	m3/min	CFM	mm-H2O	In-H2O	dBA	NO.
BGE0505_05H	F	5	3~5.5	0.16	3900		1.60	6.00	0.24	39.5	(1)

*Function type is optional. (其它功能類型是可加選的) *All reading are typical values at rated voltage. (所有讀數均為額定電壓下測試的參數)

* Bearing (軸承) B: Two Ball Bearing (滾珠) F: Fluid Bearing (液壓) S: Sleeve Bearing (合銅)



www.crownelectronics.com.tw



50

BGE Series Size (尺寸) 50*25 mm



General Specifications (一般規格)

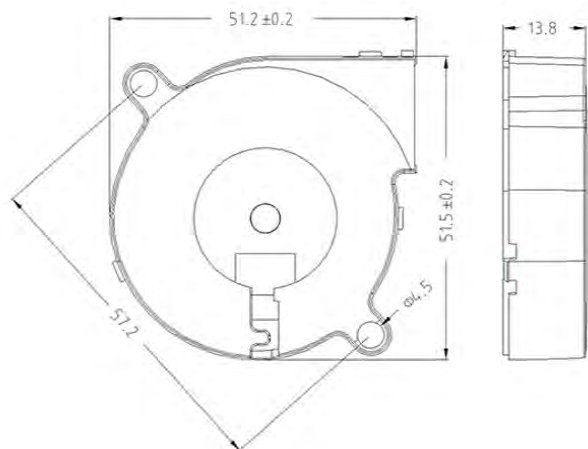
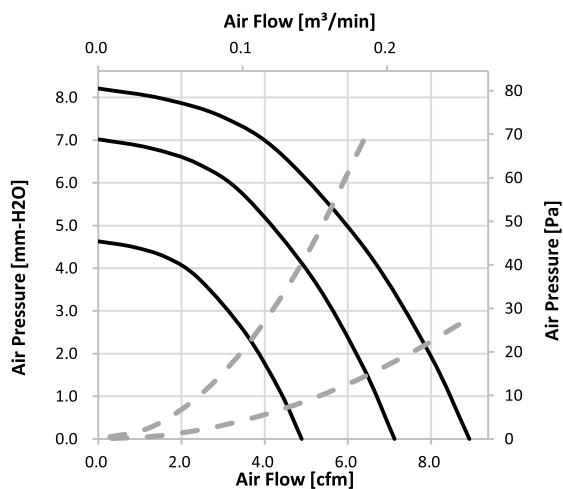
Motor	: DC Brushless DC motor.	馬達 / 直流單向無刷馬達
Frame	: Plastic (94V-0)	材料 / 框 : 塑膠 (94V-0)
Impeller	: Plastic (94V-0)	材料 / 葉 : 塑膠 (94V-0)
Bearing	: Sleeve Bearing	軸承 / 含油軸承
Weight	: 85 g	重量 / 85 克

Major Characteristic Parameters (主要參數)

Model 機型	Bearing System 軸承	Rated Voltage 電壓	Operating Range 操作電壓	Rated Current 電流	Rated Speed 轉速	Maximum Air Flow 最大風量		Maximum Static Pressure 最大風壓		Sound Level 噪音	P-Q P-Q曲線
						m3/min	CFM	mm-H2O	In-H2O		
Part NO.	B / F / S	V	V	A	RPM					dBA	NO.
BGE05025_05L	S	5	4.5~5.0	0.12	2500	0.14	4.89	4.63	0.18	20.2	(3)
BGE05025_05M	S	5	4.5~5.0	0.17	3500	0.20	7.12	7.02	0.28	29.6	(2)
BGE05025_05H	S	5	4.5~5.0	0.20	4000	0.25	8.92	8.21	0.32	33.6	(1)
BGE05025_12L	S	12	7~13.2	0.07	2500	0.14	4.89	4.63	0.18	20.2	(3)
BGE05025_12M	S	12	7~13.2	0.10	3500	0.20	7.12	7.02	0.28	29.6	(2)
BGE05025_12H	S	12	7~13.2	0.13	4000	0.25	8.92	4.63	0.18	33.6	(1)
BGE05025_24L	S	24	14~26.4	0.06	2500	0.14	4.89	7.02	0.28	20.2	(3)
BGE05025_24M	S	24	14~26.4	0.08	3500	0.20	7.12	8.21	0.32	29.6	(2)
BGE05025_24H	S	24	14~26.4	0.09	4000	0.25	8.92	8.21	0.32	33.6	(1)

*Function type is optional. (其它功能類型是可加選的) *All reading are typical values at rated voltage. (所有讀數均為額定電壓下測試的參數)

* Bearing (軸承) B: Two Ball Bearing (滾珠) F: Fluid Bearing (液壓) S: Sleeve Bearing (合銅)



60

BGE Series

Size (尺寸) 60*60*15

General Specifications (一般規格)

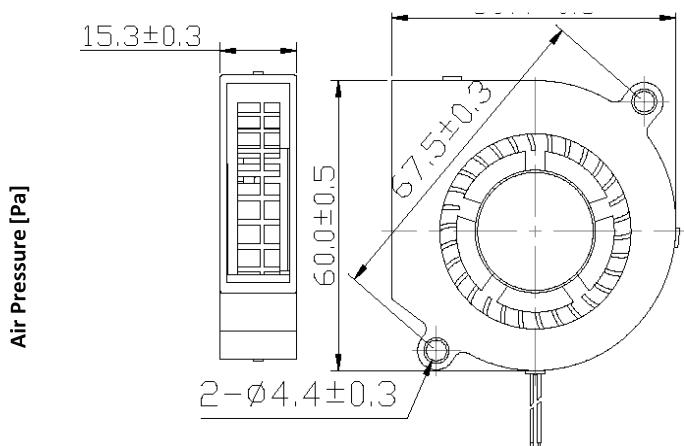
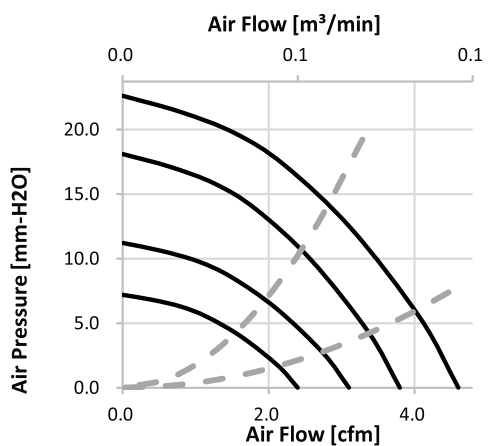
Motor : DC Brushless DC motor.	馬達 / 直流單向無刷馬達
Frame : Plastic (94V-0)	材料 / 框 : 塑膠 (94V-0)
Impeller : Plastic (94V-0)	材料 / 葉 : 塑膠 (94V-0)
Bearing : Ball Bearing	軸承 / 滾珠軸承
Weight : 40 g	重量 / 40 克



Major Characteristic Parameters (主要參數)

Model 機型	Bearing System 軸承	Rated Voltage 電壓	Operating Range 操作電壓	Rated Current 電流	Rated Speed 轉速	Maximum Air Flow 最大風量		Maximum Static Pressure 最大風壓		Sound Level 噪音	P-Q 曲線
Part NO.	B / F / S	V	V	A	RPM	m3/min	CFM	mm-H2O	In-H2O	dBA	NO.
BGE06015_12L	B	12	7.0~13.2	0.07	3500	0.07	2.40	7.20	0.28	27.0	(4)
BGE06015_12M	B	12	7.0~13.3	0.09	4500	0.09	3.10	11.20	0.44	33.0	(3)
BGE06015_12H	B	12	7.0~13.4	0.11	5500	0.11	3.80	18.10	0.71	37.0	(2)
BGE06015_12U	B	12	7.0~13.4	0.13	6500	0.13	4.60	22.60	0.89	45.0	(1)

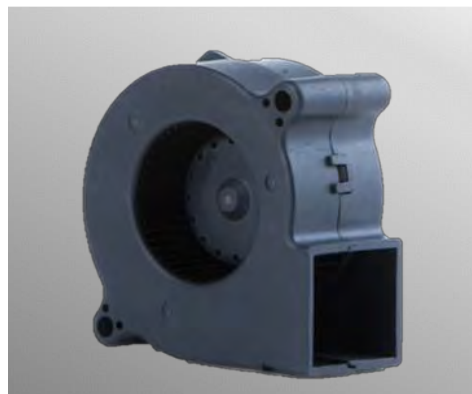
*Function type is optional. (其它功能類型是可加選的) *All reading are typical values at rated voltage. (所有讀數均為額定電壓下測試的參數)
 * Bearing (軸承) B: Two Ball Bearing (滾珠) F: Fluid Bearing (液壓) S: Sleeve Bearing (合銅) *The P-Q NO. is counted from low CFM. (P-Q曲線區分, 請從最小風量(1)往大的數)



60

BGE Series

Size (尺寸) 60*60*25



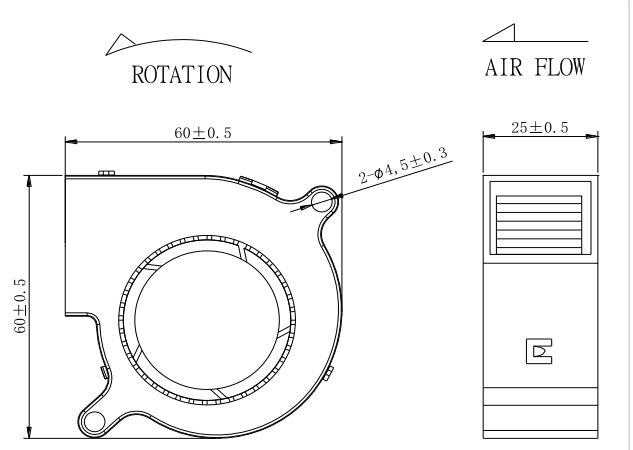
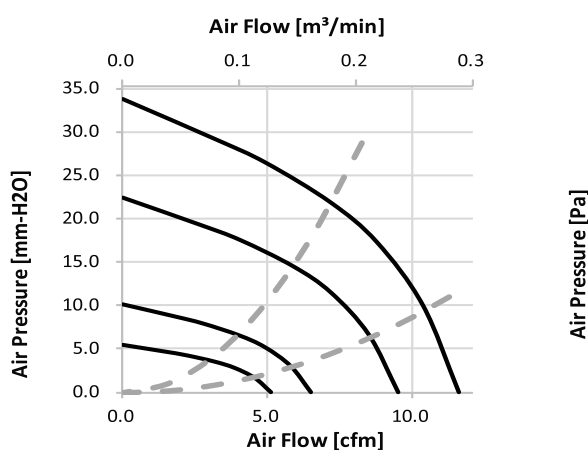
General Specifications (一般規格)

Motor	: DC Brushless DC motor.	馬達 / 直流單向無刷馬達
Frame	: Plastic (94V-0)	材料 / 框: 塑膠 (94V-0)
Impeller	: Plastic (94V-0)	材料 / 葉: 塑膠 (94V-0)
Bearing	: Ball;FMB Bearing	軸承 / 滾珠;液壓軸承
Weight	: 45 g	重量 / 45 克

Major Characteristic Parameters (主要參數)

Model 機型	Bearing System 軸承	Rated Voltage 電壓	Operating Range 操作電壓	Rated Current 電流	Rated Speed 轉速	Maximum Air Flow 最大風量		Maximum Static Pressure 最大風壓		Sound Level 噪音	P-Q 曲線
Part NO.	B / F / S	V	V	A	RPM	m3/min	CFM	mm-H2O	In-H2O	dBA	NO.
BGE06025_12J	B F	12	7.0~13.2	0.10	2500	0.14	5.10	5.40	0.21	23.5	(4)
BGE06025_12L	B F	12	7.0~13.2	0.25	3500	0.18	6.50	10.20	0.40	27.0	(3)
BGE06025_12M	B F	12	7.0~13.2	0.40	4500	0.27	9.50	22.40	0.88	41.0	(2)
BGE06025_12H	B F	12	7.0~13.2	0.50	5500	0.33	11.60	33.70	1.33	47.0	(1)
BGE06025_24M	B F	24	14.0~26.2	0.14	4500	0.27	9.50	22.40	0.88	41.0	(2)

*Function type is optional. (其它功能類型是可加選的) *All reading are typical values at rated voltage. (所有讀數均為額定電壓下測試的參數)
* Bearing (軸承) B: Two Ball Bearing (滾珠) F: Fluid Bearing (液壓) S: Sleeve Bearing (合銅) *The P-Q NO. is counted from low CFM.(P-Q曲線區分,請從最小風量(1)往大的數)



60

BGQ Series

Size (尺寸) 60*60*25

General Specifications (一般規格)

Motor : DC Brushless DC motor.	馬達 / 直流單向無刷馬達
Frame : Plastic (94V-0)	材料 / 框 : 塑膠 (94V-0)
Impeller : Plastic (94V-0)	材料 / 葉 : 塑膠 (94V-0)
Bearing : Ball;FMB Bearing	軸承 / 滾珠;液壓軸承
Weight : g	重量 / 克



Major Characteristic Parameters (主要參數)

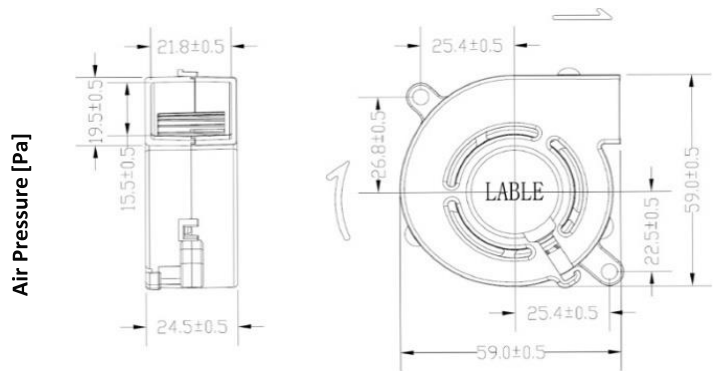
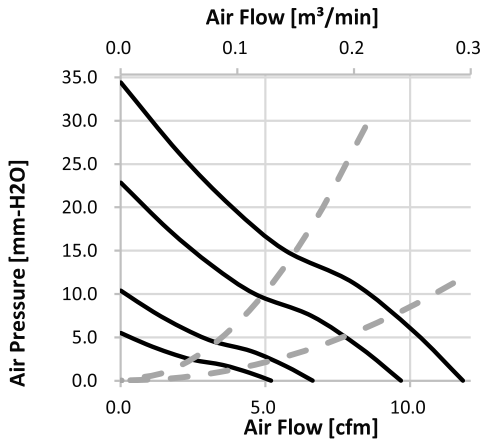
Model 機型	Bearing System 軸承	Rated Voltage 電壓	Operating Range 操作電壓	Rated Current 電流	Rated Speed 轉速	Maximum Air Flow 最大風量		Maximum Static Pressure 最大風壓		Sound Level 噪音	P-Q 曲線
Part NO.	B / F / S	V	V	A	RPM	m3/min	CFM	mm-H2O	In-H2O	dBA	NO.
BGQ06025_12J	B F	12	7.0~13.2	0.10	2500	0.14	5.20	5.51	0.21	23.6	(4)
BGQ06025_12L	B F	12	7.0~13.2	0.25	3500	0.18	6.63	10.41	0.40	27.1	(3)
BGQ06025_12M	B F	12	7.0~13.2	0.40	4500	0.27	9.69	22.86	0.88	41.0	(2)
BGQ06025_12H	B F	12	7.0~13.2	0.50	5500	0.33	11.83	34.39	1.33	47.1	(1)
BGQ06025_24M	B F	24	14.0~26.2	0.14	4500	0.27	9.69	22.86	0.88	41.0	(2)

*Function type is optional. (其它功能類型是可加選的)

*All reading are typical values at rated voltage. (所有讀數均為額定電壓下測試的參數)

* Bearing (軸承) B: Two Ball Bearing (滾珠) F: Fluid Bearing (液壓) S: Sleeve Bearing (合銅)

*The P-Q NO. is counted from low CFM.(P-Q曲線區分,請從最小風量(1)往大的數)



www.crownelectronics.com.tw



70 BGN Series

Size (尺寸) 70*70*25

■ General Specifications (一般規格)

Motor : DC Brushless DC motor.	馬達 / 直流單向無刷馬達
Frame : Plastic (94V-0)	材料 / 框 : 塑膠 (94V-0)
Impeller : Plastic (94V-0)	材料 / 葉 : 塑膠 (94V-0)
Bearing : FMB; Sleeve Bearing	軸承 / 液壓; 含油軸承
Weight : 72 g	重量 / 72 克



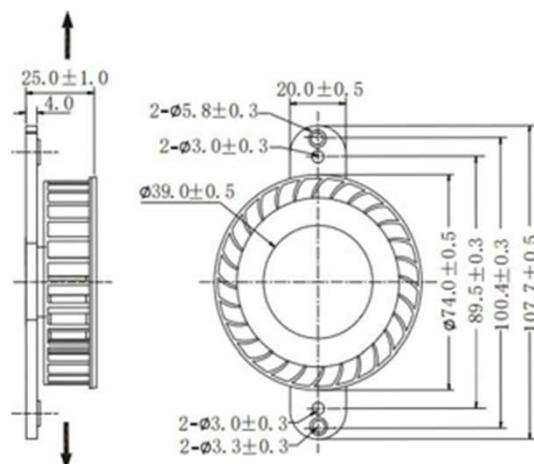
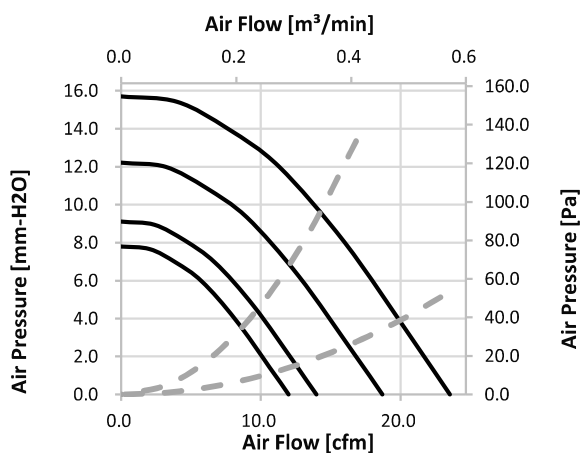
■ Major Characteristic Parameters (主要參數)

Model 機型	Bearing System 軸承	Rated Voltage 電壓	Operating Range 操作電壓	Rated Current 電流	Rated Speed 轉速	Maximum Air Flow 最大風量		Maximum Static Pressure 最大風壓		Sound Level 噪音	P-Q 曲線
Part NO.	B / F / S	V	V	A	RPM	m3/min	CFM	mm-H2O	In-H2O	dBA	NO.
BGN07025_12J	F S	12	7.0~13.2	0.21	2600	0.34	11.99	7.80	0.31	31.1	(4)
BGN07025_24J	F S	24	14.0~26.4	0.11	2600	0.34	11.99	7.80	0.31	31.1	(4)
BGN07025_12L	F S	12	7.0~13.2	0.25	3000	0.40	13.97	9.10	0.36	40.4	(3)
BGN07025_24L	F S	24	14.0~26.4	0.18	3000	0.40	13.97	9.10	0.36	40.4	(3)
BGN07025_12M	F S	12	7.0~13.2	0.42	3600	0.53	18.70	12.20	0.48	46.5	(2)
BGN07025_24M	F S	24	14.0~26.4	0.24	3600	0.53	18.70	12.20	0.48	46.5	(2)
BGN07025_12H	F S	12	7.0~13.2	0.52	4000	0.67	23.54	15.70	0.62	50.3	(1)
BGN07025_24H	F S	24	14.0~26.4	0.33	4000	0.67	23.54	15.70	0.62	50.3	(1)

*Function type is optional. (其它功能類型是可加選的)

*All reading are typical values at rated voltage. (所有讀數均為額定電壓下測試的參數)

* Bearing (軸承) B: Two Ball Bearing (滾珠) F: Fluid Bearing (液壓) S: Sleeve Bearing (合銅)



70

BGE Series

Size (尺寸) 70*70*15

General Specifications (一般規格)

Motor : DC Brushless DC motor.	馬達 / 直流單向無刷馬達
Frame : Plastic (94V-0)	材料 / 框 : 塑膠 (94V-0)
Impeller : Plastic (94V-0)	材料 / 葉 : 塑膠 (94V-0)
Bearing : Ball Bearing	軸承 / 滾珠軸承
Weight : 85 g	重量 / 85 克

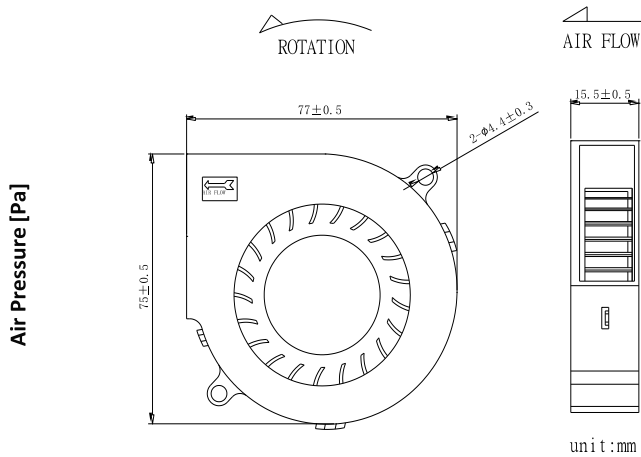
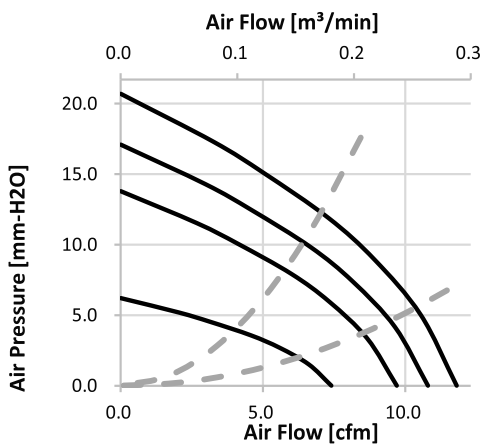


Major Characteristic Parameters (主要參數)

Model 機型	Bearing System 軸承	Rated Voltage 電壓	Operating Range 操作電壓	Rated Current 電流	Rated Speed 轉速	Maximum Air Flow 最大風量		Maximum Static Pressure 最大風壓		Sound Level 噪音	P-Q 曲線
Part NO.	B / F / S	V	V	A	RPM	m3/min	CFM	mm-H ₂ O	In-H ₂ O	dBA	NO.
BGE07015_12M	B	12	7.0~13.2	0.21	4000	0.21	7.40	6.20	0.24	43.0	(4)
BGE07015_12H	B	12	7.0~13.2	0.32	4500	0.27	9.70	13.80	0.54	47.0	(3)
BGE07015_12U	B	12	7.0~13.2	0.40	5000	0.31	10.80	17.10	0.67	49.0	(2)
BGE07015_12V	B	12	7.0~13.2	0.50	5500	0.33	11.80	20.70	0.81	51.0	(1)

*Function type is optional. (其它功能類型是可加選的) *All reading are typical values at rated voltage. (所有讀數均為額定電壓下測試的參數)

* Bearing (軸承) B: Two Ball Bearing (滾珠) F: Fluid Bearing (液壓) S: Sleeve Bearing (合銅) *The P-Q NO. is counted from low CFM. (P-Q曲線區分, 請從最小風量(1)往大的數)



unit:mm



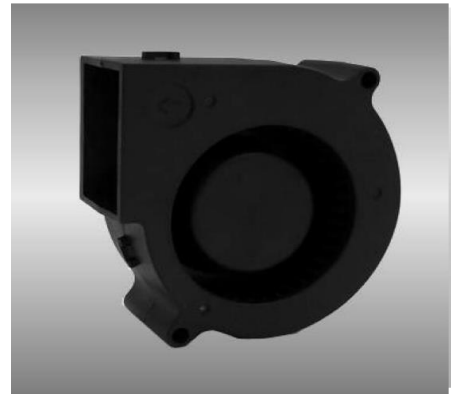
75

BGE Series

Size (尺寸) 75*30 mm

General Specifications (一般規格)

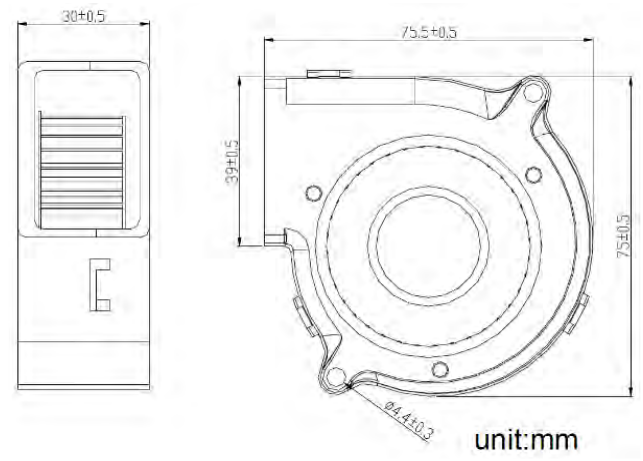
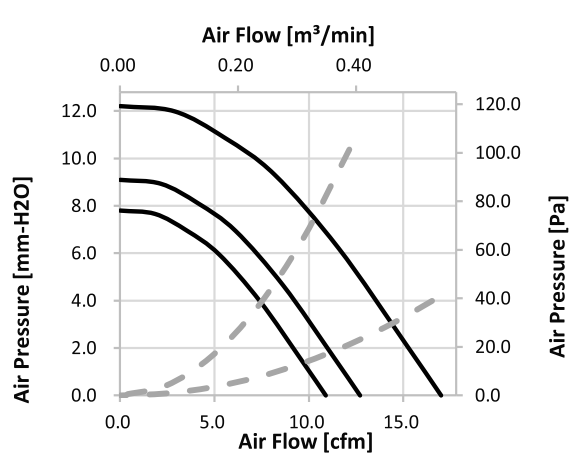
Motor : DC Brushless DC motor.	馬達 / 直流單向無刷馬達
Frame : Plastic (94V-0)	材料 / 框 : 塑膠 (94V-0)
Impeller : Plastic (94V-0)	材料 / 葉 : 塑膠 (94V-0)
Bearing : Sleeve Bearing	軸承 / 含油軸承
Weight : 100 g	重量 / 100 克



Major Characteristic Parameters (主要參數)

Model 機型	Bearing System 軸承	Rated Voltage 電壓	Operating Range 操作電壓	Rated Current 電流	Rated Speed 轉速	Maximum Air Flow 最大風量		Maximum Static Pressure 最大風壓		Sound Level 噪音	P-Q 曲線
						m3/min	CFM	mm-H2O	In-H2O		
Part NO.	B / F / S	V	V	A	RPM					dBA	NO.
BGE07530_12J	B S R	12	7.0~13.2	0.19	2600	0.31	10.90	7.80	0.31	32.1	(4)
BGE07530_24J	B S R	24	14.0~26.4	0.10	2600	0.31	10.90	7.80	0.31	32.1	(4)
BGE07530_12L	B S R	12	7.0~13.2	0.23	3000	0.36	12.70	9.10	0.36	41.4	(3)
BGE07530_24L	B S R	24	14.0~26.4	0.16	3000	0.36	12.70	9.10	0.36	41.4	(3)
BGE07530_12M	B S R	12	7.0~13.2	0.38	3600	0.48	17.00	12.20	0.48	47.5	(2)
BGE07530_24M	B S R	24	14.0~26.4	0.22	3600	0.48	17.00	12.20	0.48	47.5	(2)
BGE07530_12H	B S R	12	7.0~13.2	0.47	4000	0.61	21.40	15.70	0.62	51.3	(1)
BGE07530_24H	B S R	24	14.0~26.4	0.30	4000	0.61	21.40	15.70	0.62	51.3	(1)

*Function type is optional. (其它功能類型是可加選的) *All reading are typical values at rated voltage. (所有讀數均為額定電壓下測試的參數)
 * Bearing (軸承) - B: Two Ball Bearing (滾珠) F: Fluid Bearing (液壓) S: Sleeve Bearing (含銅) Specification is subject to change for upgrading without notice



80

BGN Series

Size (尺寸) 80*80*25

General Specifications (一般規格)

Motor : DC Brushless DC motor.	馬達 / 直流單向無刷馬達
Frame : Plastic (94V-0)	材料 / 框 : 塑膠 (94V-0)
Impeller : Plastic (94V-0)	材料 / 葉 : 塑膠 (94V-0)
Bearing : Ball;FMB;Sleeve Bearing	軸承 / 滾珠;液壓;含油軸承
Weight : 72 g	重量 / 72 克



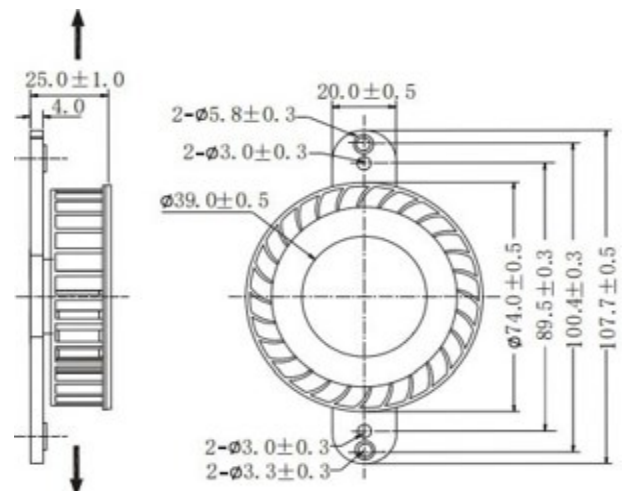
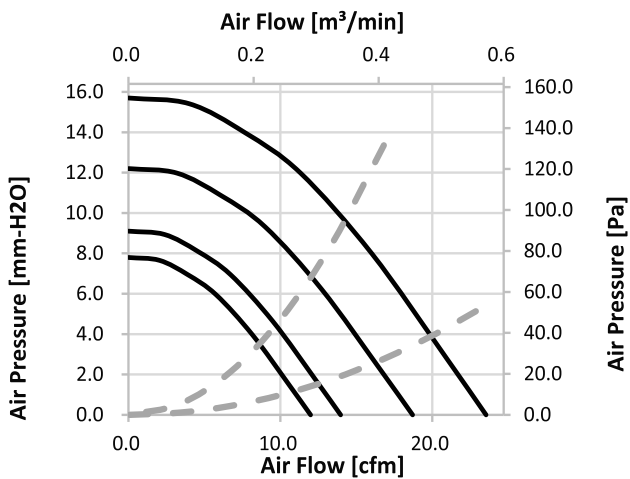
Major Characteristic Parameters (主要參數)

Model 機型	Bearing System 軸承	Rated Voltage 電壓	Operating Range 操作電壓	Rated Current 電流	Rated Speed 轉速	Maximum Air Flow 最大風量		Maximum Static Pressure 最大風壓		Sound Level 噪音	P-Q 曲線
Part NO.	B / F / S	V	V	A	RPM	m3/min	CFM	mm-H2O	In-H2O	dBA	NO.
BGN08025_12J	B F S	12	7.0~13.2	0.21	2600	0.34	11.99	7.80	0.31	31.1	(4)
BGN08025_24J	B F S	24	14.0~26.4	0.11	2600	0.34	11.99	7.80	0.31	31.1	(4)
BGN08025_12L	B F S	12	7.0~13.2	0.25	3000	0.40	13.97	9.10	0.36	40.4	(3)
BGN08025_24L	B F S	24	14.0~26.4	0.18	3000	0.40	13.97	9.10	0.36	40.4	(3)
BGN08025_12M	B F S	12	7.0~13.2	0.42	3600	0.53	18.70	12.20	0.48	46.5	(2)
BGN08025_24M	B F S	24	14.0~26.4	0.24	3600	0.53	18.70	12.20	0.48	46.5	(2)
BGN08025_12H	B F S	12	7.0~13.2	0.52	4000	0.67	23.54	15.70	0.62	50.3	(1)
BGN08025_24H	B F S	24	14.0~26.4	0.33	4000	0.67	23.54	15.70	0.62	50.3	(1)

*Function type is optional. (其它功能類型是可加選的)

*All reading are typical values at rated voltage. (所有讀數均為額定電壓下測試的參數)

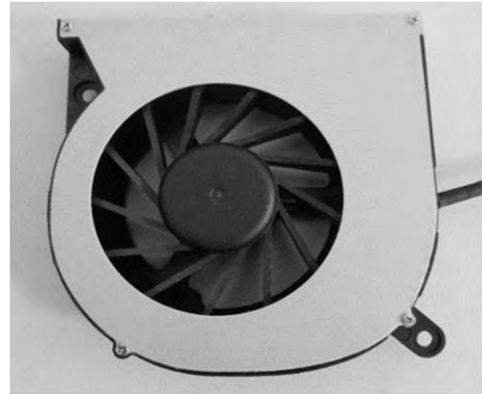
* Bearing (軸承) B: Two Ball Bearing (滾珠) F: Fluid Bearing (液壓) S: Sleeve Bearing (合銅)



80

BGE Series

Size (尺寸) 80*80*17.5



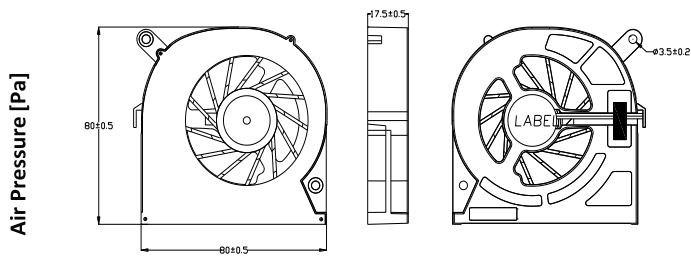
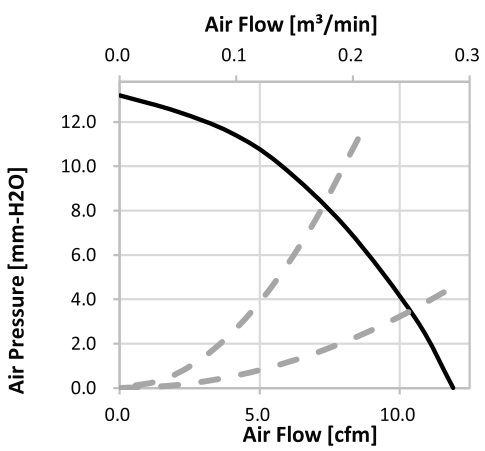
General Specifications (一般規格)

Motor : DC Brushless DC motor.	馬達 / 直流單向無刷馬達
Frame : Plastic (94V-0)	材料 / 框 : 塑膠 (94V-0)
Impeller : Plastic (94V-0)	材料 / 葉 : 塑膠 (94V-0)
Bearing : Ball;FMB Bearing	軸承 / 滾珠;液壓軸承
Weight : 35 g	重量 / 35 克

Major Characteristic Parameters (主要參數)

Model 機型	Bearing System 軸承	Rated Voltage 電壓	Operating Range 操作電壓	Rated Current 電流	Rated Speed 轉速	Maximum Air Flow 最大風量		Maximum Static Pressure 最大風壓		Sound Level 噪音	P-Q 曲線
Part NO.	B / F / S	V	V	A	RPM	m3/min	CFM	mm-H2O	In-H2O	dBA	NO.
BGE08020B12H	B F	12	7~13.5	0.23	3500	0.34	11.91	13.20	0.52	40.0	(1)

*Function type is optional. (其它功能類型是可加選的) *All reading are typical values at rated voltage. (所有讀數均為額定電壓下測試的參數)
 * Bearing (軸承) B: Two Ball Bearing (滾珠) F: Fluid Bearing (液壓) S: Sleeve Bearing (合銅) *The P-Q NO. is counted from low CFM.(P-Q曲線區分,請從最小風量(1)往大的數)



www.crownelectronics.com.tw



97

BGE Series

Size (尺寸) 97*97*33 mm

General Specifications (一般規格)

Motor : DC Brushless DC motor.	馬達 / 直流單向無刷馬達
Frame : Aluminum	材料 / 框 : 鋁
Impeller : Plastic (94V-0)	材料 / 葉 : 塑膠 (94V-0)
Bearing : Ball; Sleeve Bearing	軸承 / 滾珠; 含油軸承
Weight : 150 g	重量 / 150 克



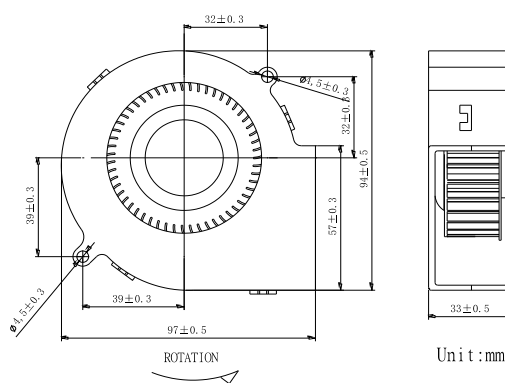
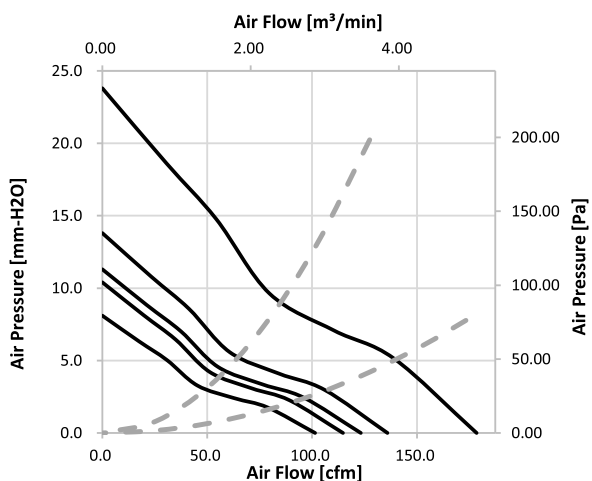
Major Characteristic Parameters (主要參數)

Model 機型	Bearing System 軸承	Rated Voltage 電壓	Operating Range 操作電壓	Rated Current 電流	Rated Speed 轉速	Maximum Air Flow 最大風量		Maximum Static Pressure 最大風壓		Sound Level 噪音	P-Q 曲線
Part NO.	B / F / S	V	V	A	RPM	m3/min	CFM	mm-H2O	In-H2O	dBA	NO.
BGE09733_12L	B S	12	7.0~13.2	0.21	2200	0.46	16.30	6.20	0.24	43.0	(4)
BGE09733_24L	B S	24	14.0~26.4	0.14	2200	0.46	16.30	6.20	0.24	43.0	(4)
BGE09733_12M	B S	12	7.0~13.2	0.32	2700	0.57	20.10	10.30	0.41	45.0	(3)
BGE09733_24M	B S	24	14.0~26.4	0.18	2700	0.57	20.10	10.30	0.41	45.0	(3)
BGE09733_12H	B S	12	7.0~13.2	0.60	3600	0.82	28.80	22.00	0.87	52.0	(2)
BGE09733_24H	B S	24	14.0~26.4	0.32	3600	0.82	28.80	22.00	0.87	52.0	(2)
BGE09733_12U	B / S	12	7~13.2	1.02	4200	0.95	33.60	29.94	1.18	188.0	(1)
BGE09733_24U	B	24	14~26.4	0.53	4200	0.82	28.83	22.04	0.87	52.0	(1)
BGE09733_12V	B / S	12	7~13.2	1.75	5500	1.07	37.75	37.80	1.49	193.9	(0)
BGE09733_24V	B	24	14~26.4	0.90	5500	0.82	28.83	22.04	0.87	52.0	(0)

*Function type is optional. (其它功能類型是可加選的)

*All reading are typical values at rated voltage. (所有讀數均為額定電壓下測試的參數)

* Bearing (軸承) B: Two Ball Bearing (滾珠) F: Fluid Bearing (液壓) S: Sleeve Bearing (含銅)



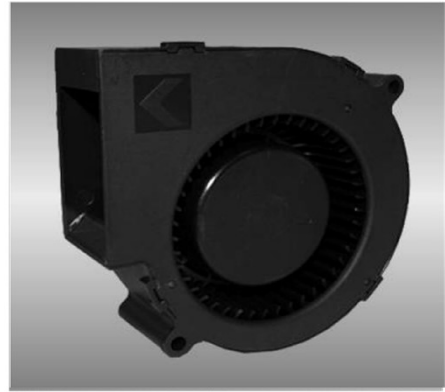
97

BGF Series

Size (尺寸) 97*95*33 mm

General Specifications (一般規格)

Motor : DC Brushless DC motor.	馬達 / 直流單向無刷馬達
Frame : Plastic (94V-0)	材料 / 框 : 塑膠 (94V-0)
Impeller : Plastic (94V-0)	材料 / 葉 : 塑膠 (94V-0)
Bearing : Ball Bearing	軸承 / 滾珠軸承
Weight : 180 g	重量 / 180 克



Major Characteristic Parameters (主要參數)

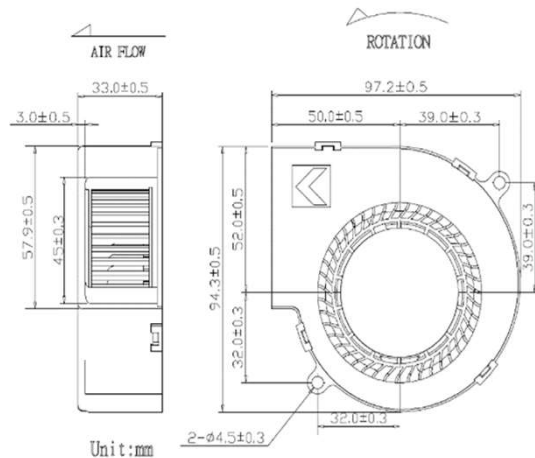
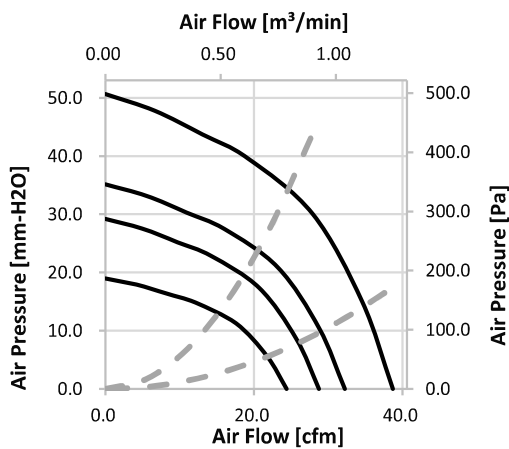
Model 機型	Bearing System 軸承	Rated Voltage 電壓	Operating Range 操作電壓	Rated Current 電流	Rated Speed 轉速	Maximum Air Flow 最大風量		Maximum Static Pressure 最大風壓		Sound Level 噪音	P-Q 曲線
						m3/min	CFM	mm-H2O	In-H2O		
Part NO.	B / F / S	V	V	A	RPM						
BGF09733_12L	B	12	7.0~13.2	0.38	2700	0.69	24.40	18.95	0.75	48.0	(5)
BGF09733_24L	B	24	14.0~26.4	0.22	2700	0.69	24.40	18.95	0.75	48.0	(5)
BGF09733_12M	B	12	7.0~13.2	0.66	3200	0.81	28.74	29.21	1.15	52.5	(4)
BGF09733_24M	B	24	14.0~26.4	0.34	3200	0.81	28.74	29.21	1.15	52.5	(4)
BGF09733_12H	B	12	7.0~13.2	0.88	3600	0.91	32.21	35.10	1.38	54.8	(3)
BGF09733_24H	B	24	14.0~26.4	0.45	3600	0.91	32.21	35.10	1.38	54.8	(3)
BGF09733_12U	B	12	7.0~13.2	1.55	4200	1.10	38.68	50.61	1.99	58.4	(2)
BGF09733_24U	B	24	14.0~26.4	0.63	4200	1.10	38.68	50.61	1.99	58.4	(2)
BGF09733_12V	B	12	7.0~13.2	1.90	5000	1.29	45.61	74.68	2.94	62.7	(1)
BGF09733_24V	B	24	14.0~26.4	1.00	5000	1.29	45.61	74.68	2.94	62.7	(1)

*Function type is optional. (其它功能類型是可加選的)

*All reading are typical values at rated voltage. (所有讀數均為額定電壓下測試的參數)

* Bearing (軸承) B: Two Ball Bearing (滾珠) F: Fluid Bearing (液壓) S: Sleeve Bearing (合銅)

*The P-Q NO. is counted from low CFM. (P-Q曲線區分,請從最小風量(1)往大的數)



97

BGT Series

Size (尺寸) 97*97*33

General Specifications (一般規格)

Motor : DC Brushless DC motor.	馬達 / 直流單向無刷馬達
Frame : Plastic (94V-0)	材料 / 框 : 塑膠 (94V-0)
Impeller : Plastic (94V-0)	材料 / 葉 : 塑膠 (94V-0)
Bearing : Ball Bearing	軸承 / 滾珠軸承
Weight : 200 g	重量 / 200 克



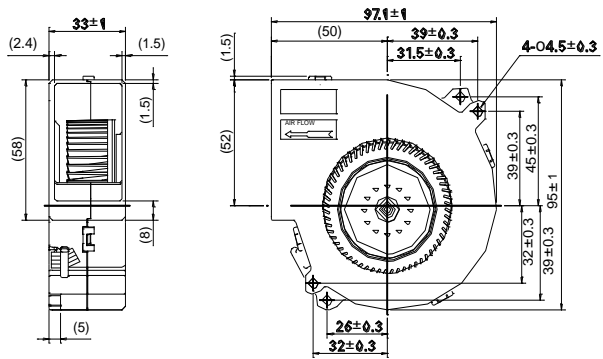
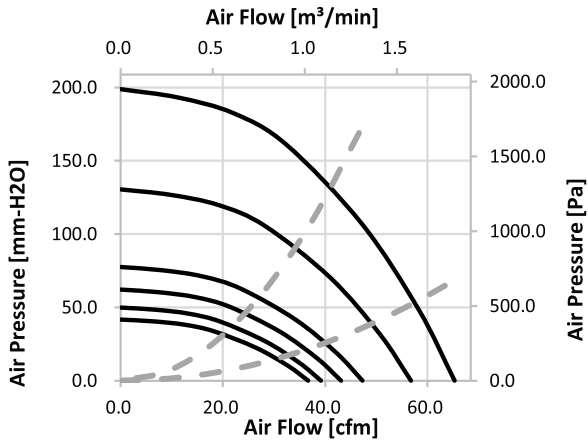
Major Characteristic Parameters (主要參數)

Model 機型	Bearing System 軸承	Rated Voltage 電壓	Operating Range 操作電壓	Rated Current 電流	Rated Speed 轉速	Maximum Air Flow 最大風量		Maximum Static Pressure 最大風壓		Sound Level 噪音	P-Q 曲線
Part NO.	B / F / S	V	V	A	RPM	m3/min	CFM	mm-H2O	In-H2O	dBA	NO.
BGT09733_12L	B	12	10.8-13.2	0.9	4500	1.04	36.7	41.79	1.65	56	(6)
BGT09733_24L	B	24	14.0-26.2	0.45	4500	1.04	36.7	41.79	1.65	56	(6)
BGT09733_24M	B	24	14.0-26.2	0.55	4850	1.11	39.2	49.95	1.97	57	(5)
BGT09733_12M	B	12	10.8-13.2	1.1	4850	1.11	39.2	49.95	1.97	57	(5)
BGT09733_12H	B	24	14.0-26.2	0.70	5250	1.22	43.1	62.18	2.45	59	(4)
BGT09733_24H	B	12	10.8-13.2	1.4	5250	1.22	43.1	62.18	2.45	59	(4)
BGT09733_24U	B	12	10.8-13.2	1.8	5750	1.34	47.3	77.47	3.05	61	(3)
BGT09733_12U	B	24	14.0-26.2	0.83	5750	1.34	47.3	77.47	3.05	61	(3)
BGT09733_24V	B	12	10.8-13.2	3.4	6850	1.61	56.80	130.49	5.14	66	(2)
BGT09733_12V	B	24	21-26.4	1.62	6850	1.61	56.80	130.49	5.14	66	(2)
BGT09733_12W	B	12	10.8-13.2	6.2	8200	1.85	65.3	198.77	7.83	69	(1)
BGT09733_24W	B	24	21-26.4	2.60	8200	1.85	65.3	198.77	7.83	69	(1)

*Function type is optional. (其它功能類型是可加選的)

*All reading are typical values at rated voltage. (所有讀數均為額定電壓下測試的參數)

* Bearing (軸承) B: Two Ball Bearing (滾珠) F: Fluid Bearing (液壓) S: Sleeve Bearing (合銅)



www.crownelectronics.com.tw

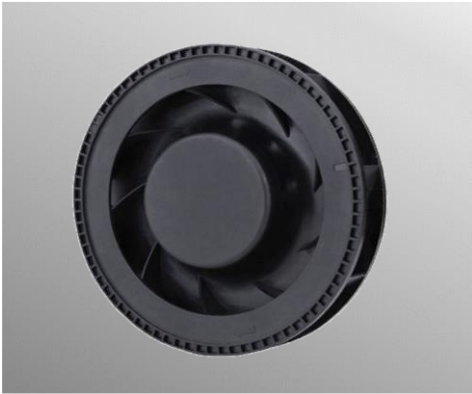


100 BGN Series

Size (尺寸) 100*100*25

General Specifications (一般規格)

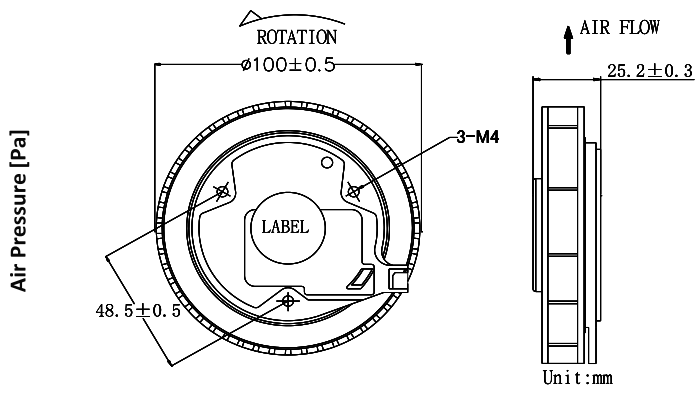
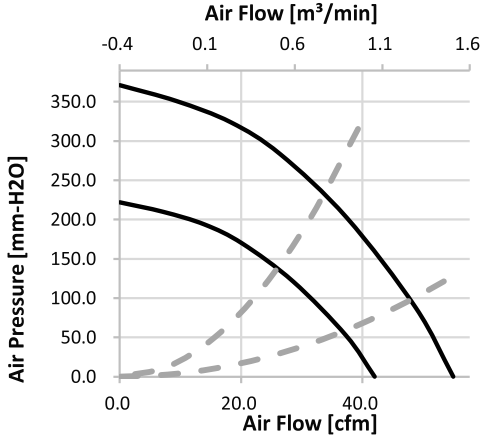
- Motor : DC Brushless DC motor. 馬達 / 直流單向無刷馬達
 Frame : Plastic (94V-0) 材料 / 框 : 塑膠 (94V-0)
 Impeller : Plastic (94V-0) 材料 / 葉 : 塑膠 (94V-0)
 Bearing : Ball Bearing 軸承 / 滾珠軸承
 Weight : 130 g 重量 / 130 克



Major Characteristic Parameters (主要參數)

Model 機型	Bearing System 軸承	Rated Voltage 電壓	Operating Range 操作電壓	Rated Current 電流	Rated Speed 轉速	Maximum Air Flow 最大風量		Maximum Static Pressure 最大風壓		Sound Level 噪音	P-Q 曲線
Part NO.	B / F / S	V	V	A	RPM	m3/min	CFM	mm-H2O	in-H2O	dBA	NO.
BGN10025B24H	B	24	14.0~26.2	0.30	4300	71.00	42.00	222.00	0.89	53.0	(2)
BGN10025B24U	B	12	14.0~26.2	0.60	5300	93.00	55.00	371.00	1.49	58.0	(1)

*Function type is optional. (其它功能類型是可加選的) *All reading are typical values at rated voltage. (所有讀數均為額定電壓下測試的參數)
 * Bearing (軸承) B: Two Ball Bearing (滾珠) F: Fluid Bearing (液壓) S: Sleeve Bearing (合銅) *The P-Q NO. is counted from low CFM.(P-Q曲線區分,請從最小風量(1)往大的數)



120 BGN Series

Size (尺寸) 120*120*25



General Specifications (一般規格)

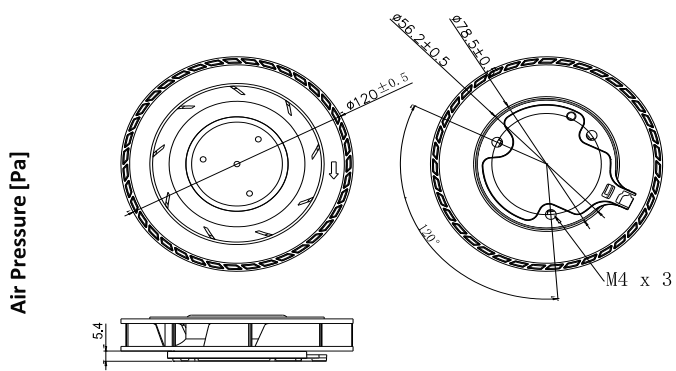
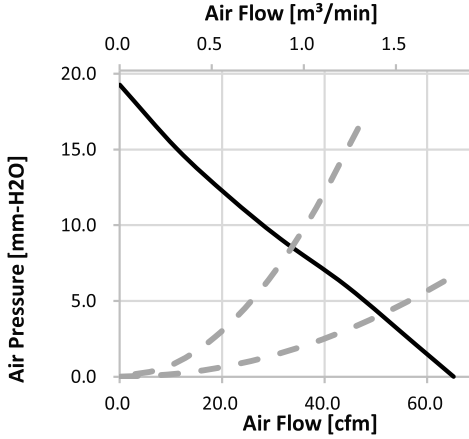
Motor : DC Brushless DC motor.	馬達 / 直流單向無刷馬達
Frame : Plastic (94V-0)	材料 / 框 : 塑膠 (94V-0)
Impeller : Plastic (94V-0)	材料 / 葉 : 塑膠 (94V-0)
Bearing : Ball Bearing	軸承 / 滾珠軸承
Weight : 180 g	重量 / 180 克

Major Characteristic Parameters (主要參數)

Model 機型	Bearing System 軸承	Rated Voltage 電壓	Operating Range 操作電壓	Rated Current 電流	Rated Speed 轉速	Maximum Air Flow 最大風量		Maximum Static Pressure 最大風壓		Sound Level 噪音	P-Q 曲線
Part NO.	B / F / S	V	V	A	RPM	m3/min	CFM	mm-H ₂ O	In-H ₂ O	dBA	NO.
BGN12025B12H	B	12	7.0~13.2	1.0	3500	1.84	65.11	19.28	0.76	54.7	(1)
BGN12025B12H	B	12	7.0~13.2	0.48	3500	1.84	65.11	19.28	0.76	54.7	(1)
BGN12025B12H	B	12	7.0~13.2	0.23	3500	1.84	65.11	19.28	0.76	54.7	(1)

*Function type is optional. (其它功能類型是可加選的) *All reading are typical values at rated voltage. (所有讀數均為額定電壓下測試的參數)

* Bearing (軸承) B: Two Ball Bearing (滾珠) F: Fluid Bearing (液壓) S: Sleeve Bearing (合銅) *The P-Q NO. is counted from low CFM. (P-Q曲線區分,請從最小風量(1)往大的數)



www.crownelectronics.com.tw



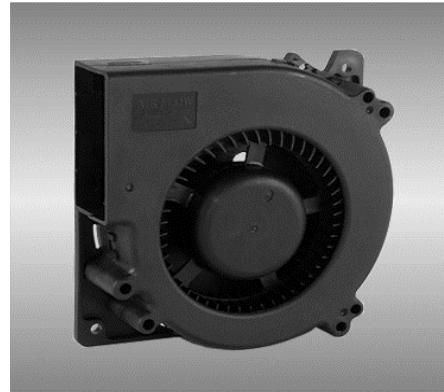
120

BGE Series

Size (尺寸) 120*120*32 mm

General Specifications (一般規格)

Motor : DC Brushless DC motor.	馬達 / 直流單向無刷馬達
Frame : Plastic (94V-0)	材料 / 框 : 塑膠 (94V-0)
Impeller : Plastic (94V-0)	材料 / 葉 : 塑膠 (94V-0)
Bearing : Ball; Sleeve Bearing	軸承 / 滾珠; 含油軸承
Weight : 230 g	重量 / 230 克



Major Characteristic Parameters (主要參數)

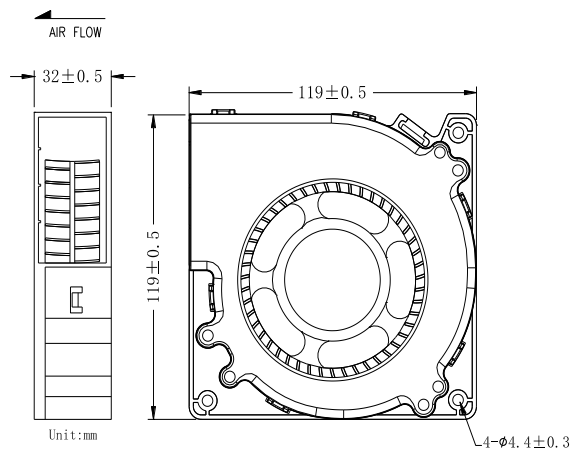
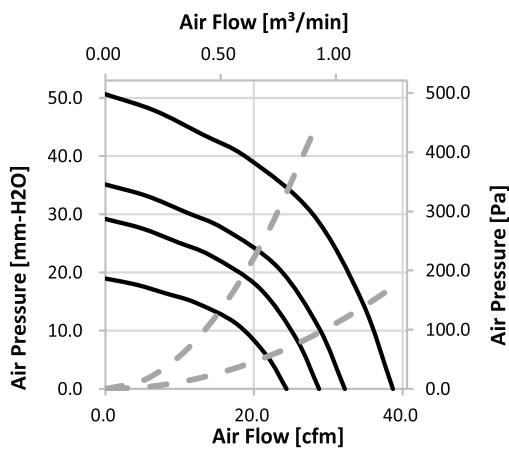
Model 機型	Bearing System 軸承	Rated Voltage 電壓	Operating Range 操作電壓	Rated Current 電流	Rated Speed 轉速	Maximum Air Flow 最大風量		Maximum Static Pressure 最大風壓		Sound Level 噪音	P-Q 曲線
						m3/min	CFM	mm-H2O	In-H2O		
Part NO.	B / F / S	V	V	A	RPM						
BGE12032_12J	B S	12	7-13.2	0.45	2100	0.70	24.62	14.20	0.56	46.0	(4)
BGE12032_24J	B S	24	14-26.4	0.24	2100	0.70	24.62	14.20	0.56	46.0	(4)
BGE12032_48J	B S	48	28-56	0.12	2100	0.70	24.62	14.20	0.56	46.0	(4)
BGE12032_12L	B S	12	7-13.2	0.63	2300	0.76	26.76	17.70	0.70	48.0	(3)
BGE12032_24L	B S	24	14-26.4	0.30	2300	0.76	26.76	17.70	0.70	48.0	(3)
BGE12032_48L	B S	48	28-56	0.15	2300	0.76	26.76	17.70	0.70	48.0	(3)
BGE12032_12M	B S	12	7-13.2	0.85	2500	0.82	28.80	21.00	0.83	50.5	(2)
BGE12032_24M	B S	24	14-26.4	0.36	2500	0.82	28.80	21.00	0.83	50.5	(2)
BGE12032_48M	B S	48	28-56	0.18	2500	0.82	28.80	21.00	0.83	50.5	(2)
BGE12032_12H	B S	12	7-13.2	1.10	2800	0.91	32.10	26.80	1.06	53.5	(1)
BGE12032_24H	B S	24	14-26.4	0.50	2800	0.91	32.10	26.80	1.06	53.5	(1)
BGE12032_48H	B S	48	28-56	0.25	2800	0.91	32.10	26.80	1.06	53.5	(1)

*Function type is optional. (其它功能類型是可加選的)

*All reading are typical values at rated voltage. (所有讀數均為額定電壓下測試的參數)

* Bearing (軸承) - B: Two Ball Bearing (滾珠) F: Fluid Bearing (液壓) S: Sleeve Bearing (合銅)

Specification is subject to change for upgrading without notice



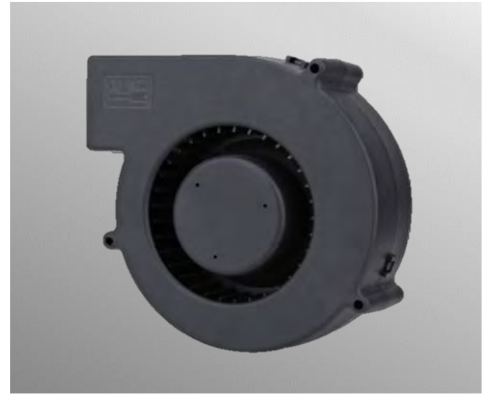
140

BGE Series

Size (尺寸) 135*135*38

General Specifications (一般規格)

Motor : DC Brushless DC motor.	馬達 / 直流單向無刷馬達
Frame : Plastic (94V-0)	材料 / 框 : 塑膠 (94V-0)
Impeller : Plastic (94V-0)	材料 / 葉 : 塑膠 (94V-0)
Bearing : Ball;FMB Bearing	軸承 / 滾珠;液壓軸承
Weight : 353 g	重量 / 353 克



Major Characteristic Parameters (主要參數)

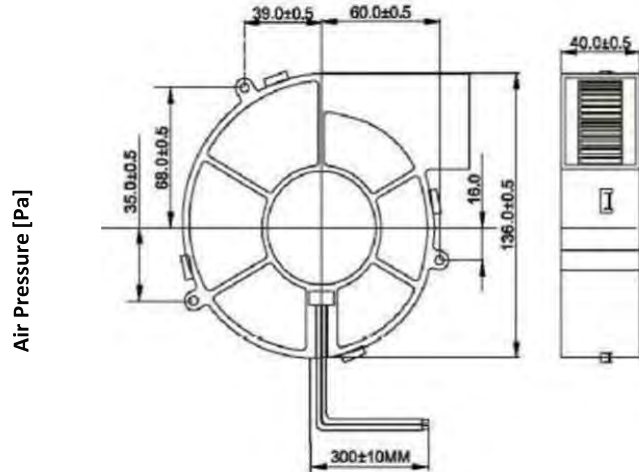
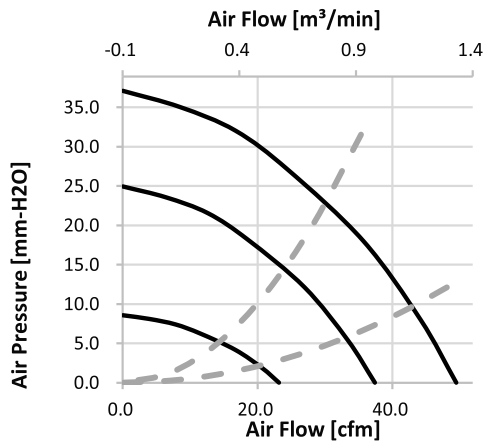
Model 機型	Bearing System 軸承	Rated Voltage 電壓	Operating Range 操作電壓	Rated Current 電流	Rated Speed 轉速	Maximum Air Flow 最大風量		Maximum Static Pressure 最大風壓		Sound Level 噪音	P-Q 曲線
Part NO.	B / F / S	V	V	A	RPM	m3/min	CFM	mm-H2O	In-H2O	dBA	NO.
BGE13538_12L	B F	12	7.0~13.2	0.18	1400	0.66	23.15	8.57	0.34	41.0	(3)
BGE13538_12L	B F	12	7.0~13.2	0.55	2200	0.94	33.36	18.84	0.74	53.0	(3)
BGE13538_12M	B F	12	7.0~13.2	0.90	2500	1.06	37.37	24.97	0.98	56.0	(2)
BGE13538_12H	B F	12	7.0~13.2	1.20	2800	1.40	49.47	37.10	1.46	57.5	(1)
BGE13538_24L	B F	24	14.0~26.2	0.10	1400	0.66	23.15	8.57	0.34	41.0	(3)
BGE13538_24L	B F	24	14.0~26.2	0.40	2200	0.94	33.36	18.84	0.74	53.0	(3)
BGE13538_24M	B F	24	14.0~26.2	0.55	2500	1.06	37.37	24.97	0.98	56.0	(2)
BGE13538_24H	B F	24	14.0~26.2	0.70	2800	1.40	49.47	37.10	1.46	57.5	(1)

*Function type is optional. (其它功能類型是可加選的)

*All reading are typical values at rated voltage. (所有讀數均為額定電壓下測試的參數)

* Bearing (軸承) B: Two Ball Bearing (滾珠) F: Fluid Bearing (液壓) S: Sleeve Bearing (合銅)

*The P-Q NO. is counted from low CFM. (P-Q曲線區分,請從最小風量(1)往大的數)



www.crownelectronics.com.tw



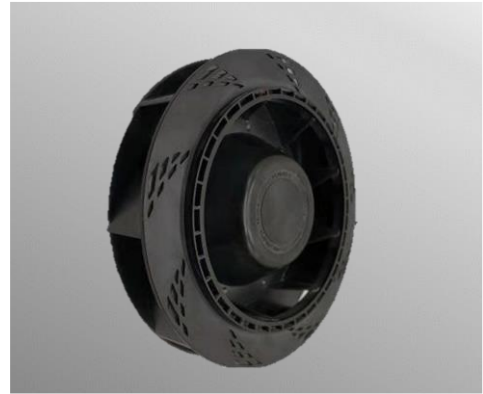
150

BGN Series

Size (尺寸) 150*150*35

General Specifications (一般規格)

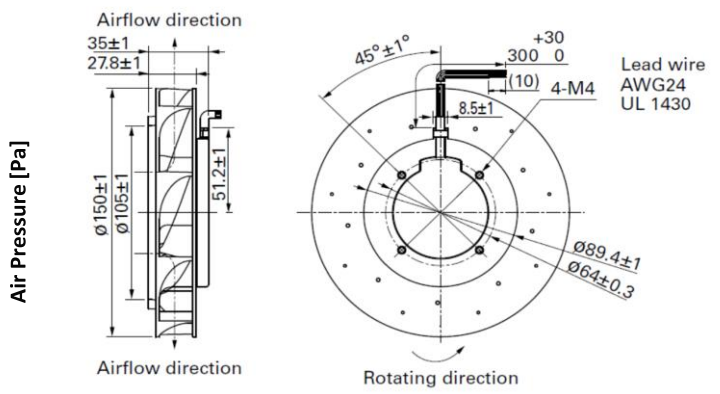
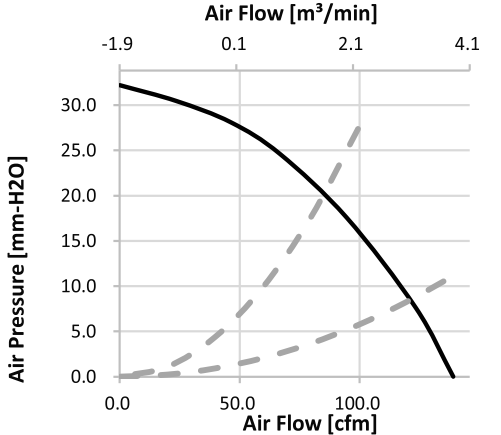
Motor : DC Brushless DC motor.	馬達 / 直流單向無刷馬達
Frame : Aluminum	材料 / 框 : 鋁
Impeller : Plastic (94V-0)	材料 / 葉 : 塑膠 (94V-0)
Bearing : Ball Bearing	軸承 / 滾珠軸承
Weight : 330 g	重量 / 330 克



Major Characteristic Parameters (主要參數)

Model 機型	Bearing System 軸承	Rated Voltage 電壓	Operating Range 操作電壓	Rated Current 電流	Rated Speed 轉速	Maximum Air Flow 最大風量		Maximum Static Pressure 最大風壓		Sound Level 噪音	P-Q 曲線
						m3/min	CFM	mm-H2O	In-H2O		
Part NO.	B / F / S	V	V	A	RPM					dB(A)	NO.
BGN15035B24U	B	24	14.0~26.2	0.70	3500	3.94	139.00	32.20	1.27	61.0	(1)
BGN15035B48U	B	48	28.0~56.0	0.40	3500	3.94	139.00	32.20	1.27	61.0	(1)

*Function type is optional. (其它功能類型是可加選的) *All reading are typical values at rated voltage. (所有讀數均為額定電壓下測試的參數)
 * Bearing (軸承) B: Two Ball Bearing (滾珠) F: Fluid Bearing (液壓) S: Sleeve Bearing (合銅) *The P-Q NO. is counted from low CFM. (P-Q曲線區分,請從最小風量(1)往大的數)



175

BGN Series

Size (尺寸) 175*175*69

General Specifications (一般規格)

Motor : DC Brushless DC motor.	馬達 / 直流單向無刷馬達
Frame : Aluminum	材料 / 框 : 鋁
Impeller : Plastic (94V-0)	材料 / 葉 : 塑膠 (94V-0)
Bearing : Ball Bearing	軸承 / 滾珠軸承
Weight : 1000 g	重量 / 1000 克



Major Characteristic Parameters (主要參數)

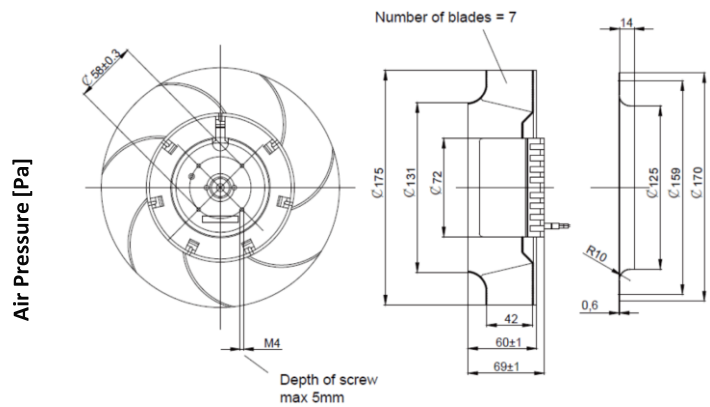
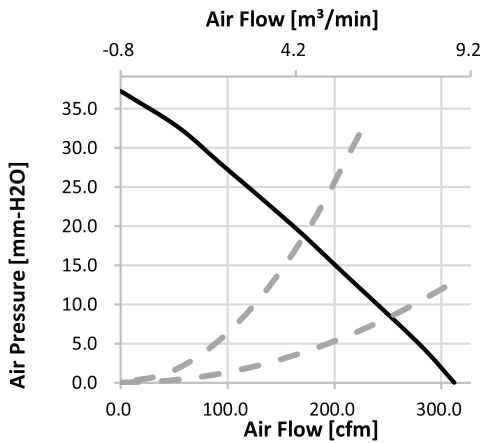
Model 機型	Bearing System 軸承	Rated Voltage 電壓	Operating Range 操作電壓	Rated Current 電流	Rated Speed 轉速	Maximum Air Flow 最大風量		Maximum Static Pressure 最大風壓		Sound Level 噪音	P-Q 曲線
Part NO.	B / F / S	V	V	A	RPM	m3/min	CFM	mm-H2O	In-H2O	dBA	NO.
BGN17569_12U	B	12	7.0~13.2	2.80	3100	8.84	312.04	37.24	1.47	64.0	(1)
BGN17569_24U	B	24	14.0~26.2	1.50	3100	8.84	312.04	37.24	1.47	64.0	(1)
BGN17569_48U	B	48	28.0~56.0	0.71	3100	8.84	312.04	37.24	1.47	64.0	(1)

*Function type is optional. (其它功能類型是可加選的)

*All reading are typical values at rated voltage. (所有讀數均為額定電壓下測試的參數)

* Bearing (軸承) B: Two Ball Bearing (滾珠) F: Fluid Bearing (液壓) S: Sleeve Bearing (合銅)

*The P-Q NO. is counted from low CFM. (P-Q曲線區分,請從最小風量(1)往大的數)



CROWN
electronics

www.crownelectronics.com.tw



190 BGN Series

Size (尺寸) 190*190*69

General Specifications (一般規格)

Motor	: DC Brushless DC motor.	馬達 / 直流單向無刷馬達
Frame	: Aluminum	材料 / 框: 鋁
Impeller	: Metal SPCC	材料 / 葉: 鋼鐵
Bearing	: Ball Bearing	軸承 / 滾珠軸承
Weight	: 1500 g	重量 / 1500 克



Major Characteristic Parameters (主要參數)

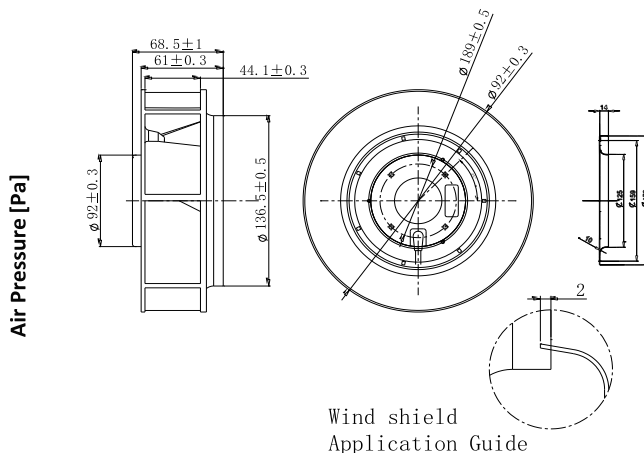
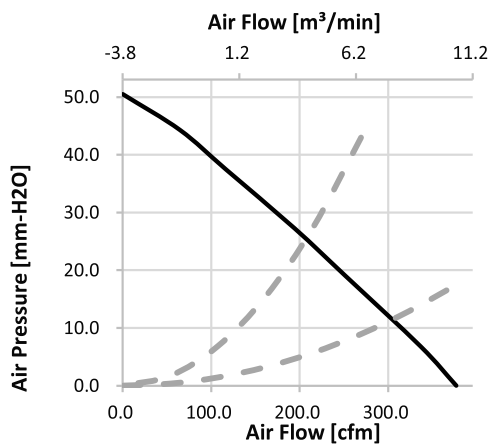
Model 機型	Bearing System 軸承	Rated Voltage 電壓	Operating Range 操作電壓	Rated Current 電流	Rated Speed 轉速	Maximum Air Flow 最大風量		Maximum Static Pressure 最大風壓		Sound Level 噪音	P-Q 曲線
						m3/min	CFM	mm-H2O	in-H2O		
Part NO.	B / F / S	V	V	A	RPM					dBA	NO.
BGN19069_24U	B	24	14.0~26.2	2.30	2900	10.68	377.00	50.51	1.99	70.0	(1)
BGN19069_48U	B	48	36.0~56.0	1.15	2900	10.68	377.00	50.51	1.99	70.0	(1)

*Function type is optional. (其它功能類型是可加選的)

*All reading are typical values at rated voltage. (所有讀數均為額定電壓下測試的參數)

* Bearing (軸承) B: Two Ball Bearing (滾珠) F: Fluid Bearing (液壓) S: Sleeve Bearing (合鋼)

*The P-Q NO. is counted from low CFM.(P-Q曲線區分,請從最小風量(1)往大的數)



190

BGN Series

Size (尺寸) 190*190*69

General Specifications (一般規格)

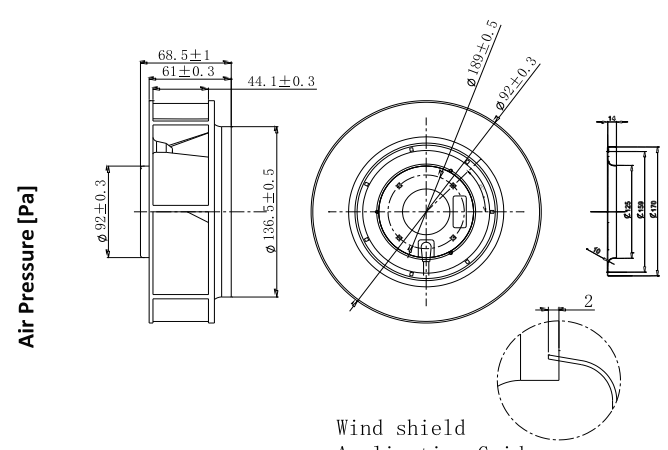
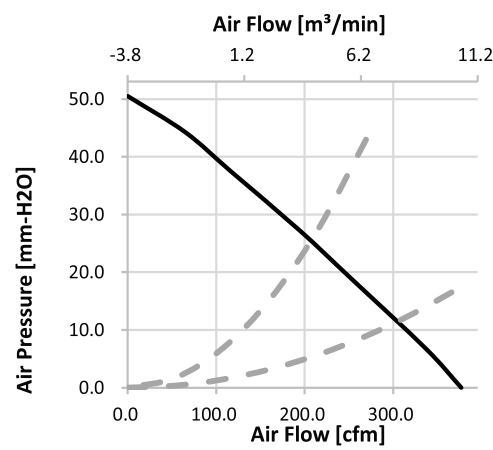
Motor : DC Brushless DC motor.	馬達 / 直流單向無刷馬達
Frame : Aluminum	材料 / 框 : 鋁
Impeller : Metal SPCC	材料 / 葉 : 鋼鐵
Bearing : Ball Bearing	軸承 / 滾珠軸承
Weight : 1500 g	重量 / 1500 克



Major Characteristic Parameters (主要參數)

Model 機型	Bearing System 軸承	Rated Voltage 電壓	Operating Range 操作電壓	Rated Current 電流	Rated Speed 轉速	Maximum Air Flow 最大風量		Maximum Static Pressure 最大風壓		Sound Level 噪音	P-Q 曲線
Part NO.	B / F / S	V	V	A	RPM	m3/min	CFM	mm-H2O	In-H2O	dBA	NO.
BGN19069_24U	B	24	14.0~26.2	2.30	2900	10.68	377.00	50.51	1.99	70.0	(1)
BGN19069_48U	B	48	36.0~56.0	1.15	2900	10.68	377.00	50.51	1.99	70.0	(1)

*Function type is optional. (其它功能類型是可加選的) *All reading are typical values at rated voltage. (所有讀數均為額定電壓下測試的參數)
 * Bearing (軸承) B: Two Ball Bearing (滾珠) F: Fluid Bearing (液壓) S: Sleeve Bearing (合銅) *The P-Q NO. is counted from low CFM.(P-Q曲線區分,請從最小風量(1)往大的數)



200

BGE Series

Size (尺寸) 200*200*60



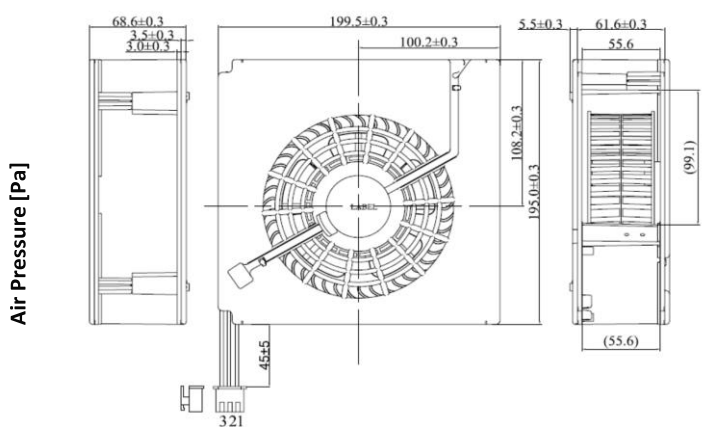
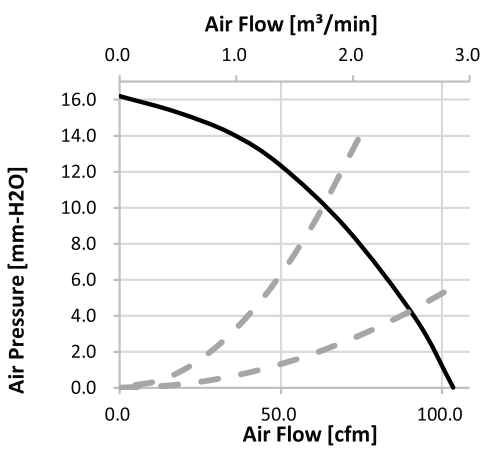
General Specifications (一般規格)

Motor : DC Brushless DC motor.	馬達 / 直流單向無刷馬達
Frame : Aluminum	材料 / 框 : 鋁
Impeller : Plastic (94V-0)	材料 / 葉 : 塑膠 (94V-0)
Bearing : Ball Bearing	軸承 / 滾珠軸承
Weight : 900 g	重量 / 900 克

Major Characteristic Parameters (主要參數)

Model 機型	Bearing System 軸承	Rated Voltage 電壓	Operating Range 操作電壓	Rated Current 電流	Rated Speed 轉速	Maximum Air Flow 最大風量		Maximum Static Pressure 最大風壓		Sound Level 噪音	P-Q 曲線
Part NO.	B / F / S	V	V	A	RPM	m3/min	CFM	mm-H2O	In-H2O	dBA	NO.
BGE20060B24U	B	24	18.0-26.2	1.80	2000	2.93	103.50	16.20	0.64	53.0	(1)
BGE20060B48U	B	48	28.0-56.0	0.40	3500	3.94	139.00	32.20	1.27	61.0	(1)

*Function type is optional. (其它功能類型是可加選的) *All reading are typical values at rated voltage. (所有讀數均為額定電壓下測試的參數)
 * Bearing (軸承) B: Two Ball Bearing (滾珠) F: Fluid Bearing (液壓) S: Sleeve Bearing (合銅) *The P-Q NO. is counted from low CFM. (P-Q曲線區分,請從最小風量(1)往大的數)



www.crownelectronics.com.tw



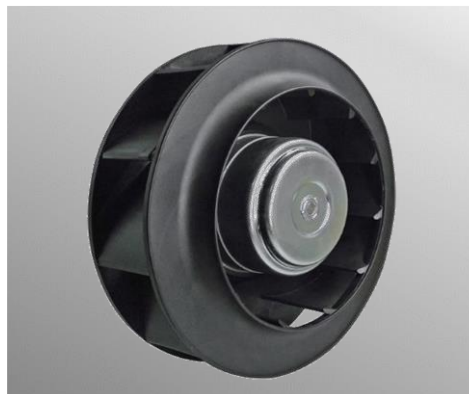
220

BGN Series

Size (尺寸) 220*220*71

General Specifications (一般規格)

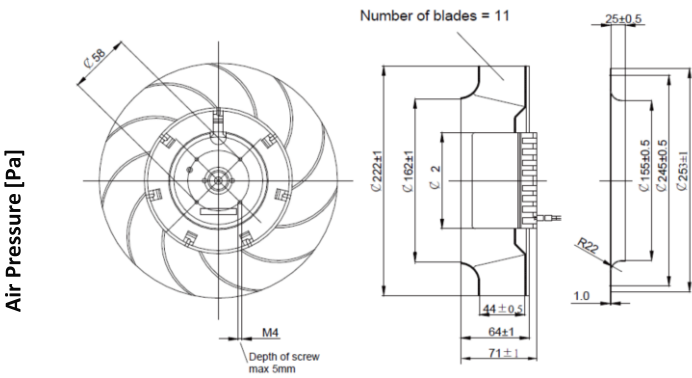
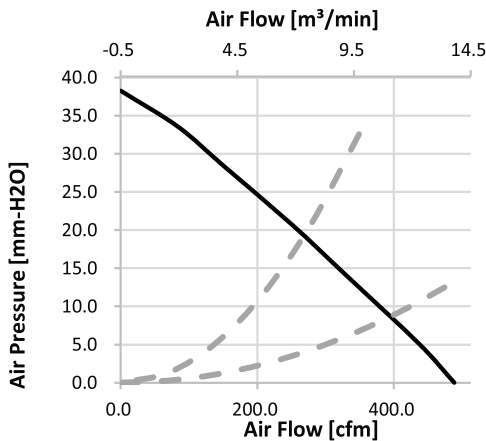
Motor : DC Brushless DC motor. 馬達 / 直流單向無刷馬達
 Frame : Aluminum 材料 / 框 : 鋁
 Impeller : Plastic (94V-0) 材料 / 葉 : 塑膠 (94V-0)
 Bearing : Ball Bearing 軸承 / 滾珠軸承
 Weight : 1500 g 重量 / 1500 克



Major Characteristic Parameters (主要參數)

Model 機型	Bearing System 軸承	Rated Voltage 電壓	Operating Range 操作電壓	Rated Current 電流	Rated Speed 轉速	Maximum Air Flow 最大風量		Maximum Static Pressure 最大風壓		Sound Level 噪音	P-Q 曲線
Part NO.	B / F / S	V	V	A	RPM	m3/min	CFM	mm-H2O	In-H2O	dBA	NO.
BGN22071_24U	B	24	14.0~26.2	2.60	2400	13.83	488.36	38.27	1.51	67.0	(1)
BGN22071_48U	B	48	36.0~56.0	1.00	2400	13.83	488.36	38.27	1.51	67.0	(1)
BGN22071_12U	B	12	7.0~13.2	4.60	2400	13.83	488.36	38.27	1.51	67.0	(1)

*Function type is optional. (其它功能類型是可加選的) *All reading are typical values at rated voltage. (所有讀數均為額定電壓下測試的參數)
 * Bearing (軸承) B: Two Ball Bearing (滾珠) F: Fluid Bearing (液壓) S: Sleeve Bearing (合銅) *The P-Q NO. is counted from low CFM.(P-Q曲線區分,請從最小風量(1)往大的數)



225

BGN Series

Size (尺寸) 225*225*99

General Specifications (一般規格)

Motor	: DC Brushless DC motor.	馬達 / 直流單向無刷馬達
Frame	: Aluminum	材料 / 框 : 鋁
Impeller	: Plastic (94V-0)	材料 / 葉 : 塑膠 (94V-0)
Bearing	: Ball Bearing	軸承 / 滾珠軸承
Weight	: 2200 g	重量 / 2200 克



Major Characteristic Parameters (主要參數)

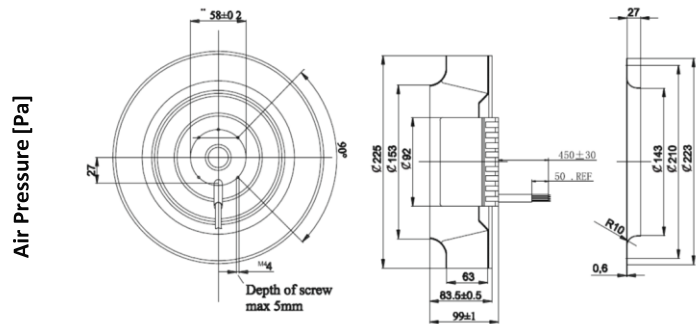
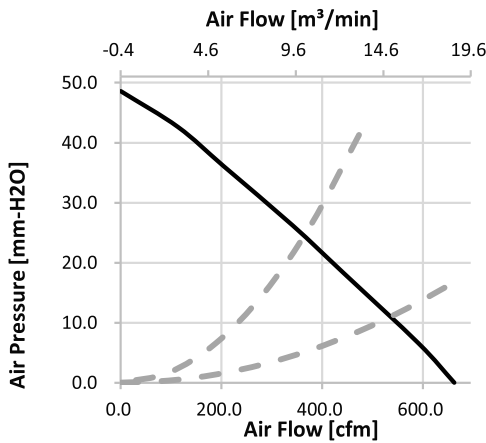
Model 機型	Bearing System 軸承	Rated Voltage 電壓	Operating Range 操作電壓	Rated Current 電流	Rated Speed 轉速	Maximum Air Flow 最大風量		Maximum Static Pressure 最大風壓		Sound Level 噪音	P-Q 曲線
Part NO.	B / F / S	V	V	A	RPM	m3/min	CFM	mm-H2O	In-H2O	dBA	NO.
BGN22599_24U	B	24	14.0~26.2	4.20	2750	18.76	662.36	48.57	1.91	72.0	(1)
BGN22599_48U	B	48	36.0~56.0	2.10	2750	18.76	662.36	48.57	1.91	72.0	(1)

*Function type is optional. (其它功能類型是可加選的)

*All reading are typical values at rated voltage. (所有讀數均為額定電壓下測試的參數)

* Bearing (軸承) B: Two Ball Bearing (滾珠) F: Fluid Bearing (液壓) S: Sleeve Bearing (合銅)

*The P-Q NO. is counted from low CFM.(P-Q曲線區分,請從最小風量(1)往大的數)

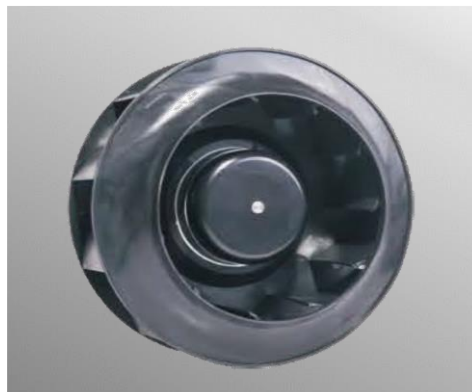


www.crownelectronics.com.tw



250 BGN Series

Size (尺寸) 250*250*99



General Specifications (一般規格)

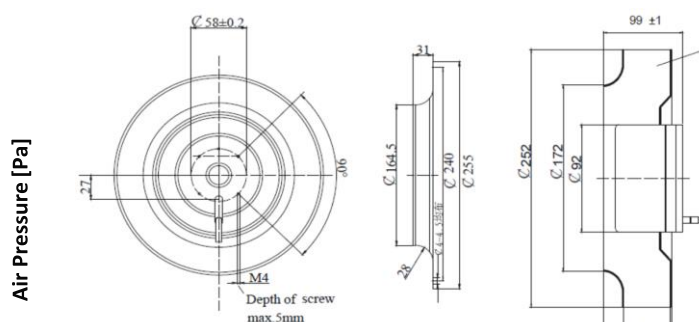
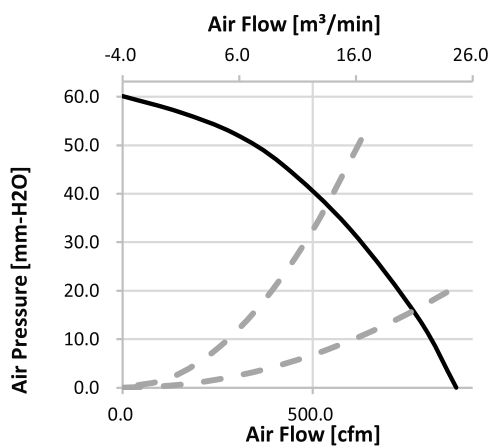
Motor	: DC Brushless DC motor.	馬達 / 直流單向無刷馬達
Frame	: Aluminum	材料 / 框: 鋁
Impeller	: Plastic (94V-0)	材料 / 葉: 塑膠 (94V-0)
Bearing	: Ball Bearing	軸承 / 滾珠軸承
Weight	: 2800 g	重量 / 2800 克

Major Characteristic Parameters (主要參數)

Model 機型	Bearing System 軸承	Rated Voltage 電壓	Operating Range 操作電壓	Rated Current 電流	Rated Speed 轉速	Maximum Air Flow 最大風量		Maximum Static Pressure 最大風壓		Sound Level 噪音	P-Q 曲線
Part NO.	B / F / S	V	V	A	RPM	m3/min	CFM	mm-H2O	In-H2O	dBA	NO.
BGN25099B24U	B	24	14.0~26.2	5.70	2750	24.85	877.54	60.10	2.37	76.0	(1)
BGN25099B48U	B	48	28.0~56.0	3.00	2750	24.85	877.54	60.10	2.37	76.0	(1)

*Function type is optional. (其它功能类型是可加选的) *All reading are typical values at rated voltage. (所有讀數均為額定電壓下測試的參數)

* Bearing (軸承) B: Two Ball Bearing (滾珠) F: Fluid Bearing (液壓) S: Sleeve Bearing (合鋼) *The P-Q NO. is counted from low CFM.(P-Q曲線區分,請從最小風量(1)往大的數)



310

BGN Series

Size (尺寸) 280*280*99

General Specifications (一般規格)

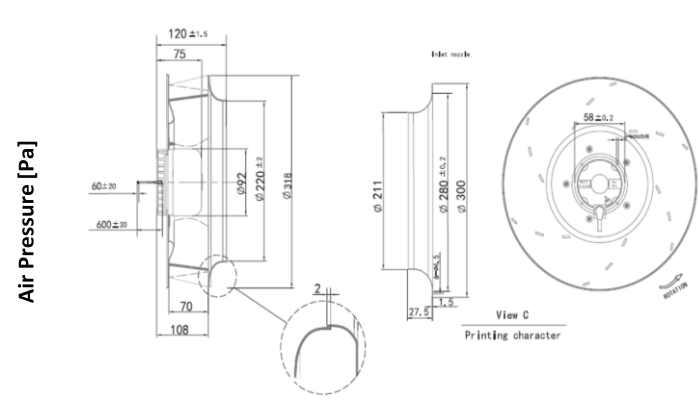
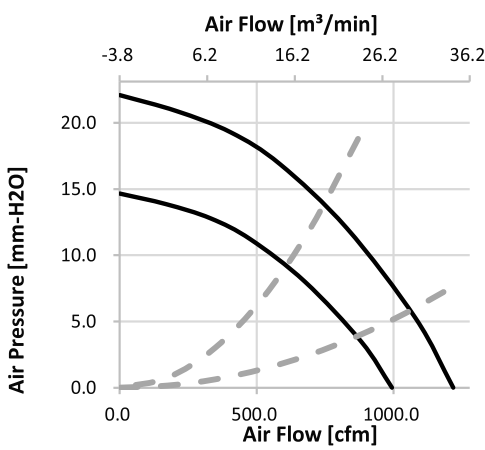
Motor : DC Brushless DC motor.	馬達 / 直流單向無刷馬達
Frame : Aluminum	材料 / 框 : 鋁
Impeller : Metal SPCC	材料 / 葉 : 鋼鐵
Bearing : Ball Bearing	軸承 / 滾珠軸承
Weight : 300 g	重量 / 300 克



Major Characteristic Parameters (主要參數)

Model 機型	Bearing System 軸承	Rated Voltage 電壓	Operating Range 操作電壓	Rated Current 電流	Rated Speed 轉速	Maximum Air Flow 最大風量		Maximum Static Pressure 最大風壓		Sound Level 噪音	P-Q 曲線 NO.
						m3/min	CFM	mm-H2O	in-H2O		
Part NO.	B / F / S	V	V	A	RPM						
BGN28099B24H	B	24	14.0~26.2	3.80	1600	28.15	994.12	14.65	0.58	62.0	(2)
BGN28099B48H	B	48	28.0~56.0	1.90	1600	28.15	994.12	14.65	0.58	62.0	(2)
BGN28099B24U	B	24	14.0~26.2	5.00	1900	34.49	1218.00	22.09	0.87	66.0	(1)
BGN28099B48U	B	48	28.0~56.0	2.50	1900	34.49	1218.00	22.09	0.87	66.0	(1)

*Function type is optional. (其它功能類型是可加選的) *All reading are typical values at rated voltage. (所有讀數均為額定電壓下測試的參數)
 * Bearing (軸承) B: Two Ball Bearing (滾珠) F: Fluid Bearing (液壓) S: Sleeve Bearing (合銅) *The P-Q NO. is counted from low CFM.(P-Q曲線區分,請從最小風量(1)往大的數)



www.crownelectronics.com.tw



130

JGW130 Series

Size (尺寸) 189*132*80

General Specifications (一般規格)

- ★ Motor : Single Pole motor. ★ 馬達 / 交流單相馬達
- ★ Frame : Metal SPCC ★ 材料 / 框 : 鋼鐵
- ★ Impeller : Metal SPCC ★ 材料 / 葉 : 鋼鐵
- ★ Bearing : Ball Bearing ★ 軸承 / 滾珠軸承
- ★ Weight : 2.11 Kg ★ 重量 / 2.11 公斤
- ★ Meet ROHS ★ 符合 ROHS



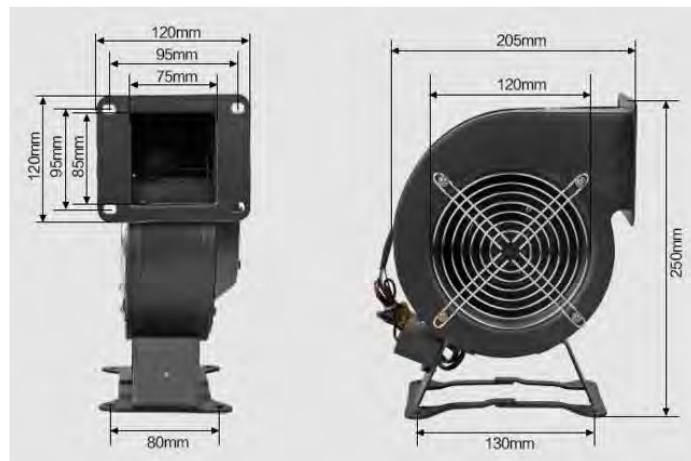
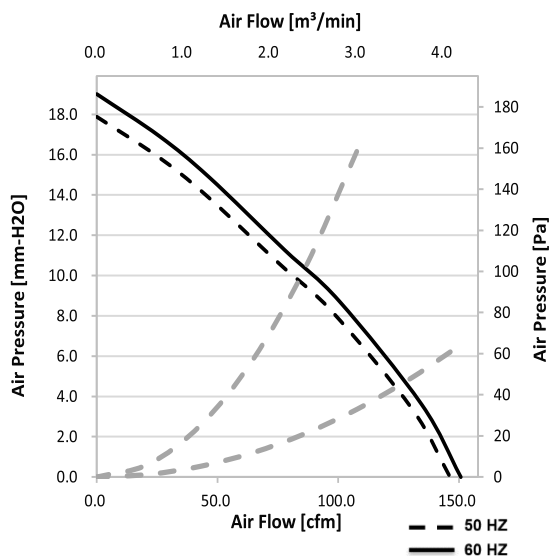
Major Characteristic Parameters

Model	Bearing System	Rated Voltage	Freq.	Input Power	Rated Speed	Maximum Air Flow		Maximum Static Pressure		Sound Level	Weight
						m3/min	CFM	mm-H2O	in-H2O		
Part NO.	B / S	V	Hz	WATT	RPM					dBA	Kg
JGW130B2H	B	230	50 / 60	80 / 85	2600 / 2680	4.1 / 4.3	146 / 151	17.9 / 19.0	0.70 / 0.75	62 / 63	2.11
JGW130B2M	B	230	50 / 60	40 / 48	1300 / 1470	1.9 / 2.2	68 / 77	4.5 / 5.7	0.18 / 0.23	52 / 55	2.11

*All reading are typical values at rated voltage

*Specifications are subject to change without notice

* Bearing system B: Two Ball Bearing S: Sleeve Bearing



189

CR076 Series

Size (尺寸) 189*132*80



General Specifications (一般規格)

- ★ Motor : Single Pole motor. ★ 馬達 / 交流單相馬達
- ★ Frame : Metal SPCC ★ 材料 / 框 : 鋼鐵
- ★ Impeller : Metal SPCC ★ 材料 / 葉 : 鋼鐵
- ★ Bearing : Ball Bearing ★ 軸承 / 滾珠軸承
- ★ Weight : 2 Kg ★ 重量 / 2 公斤
- ★ Meet ROHS ★ 符合 ROHS

Major Characteristic Parameters

Model	Bearing System	Rated Voltage	Freq.	Input Power	Rated Speed	Maximum Air Flow		Maximum Static Pressure		Remark	Weight
						m3/min	CFM	mm-H2O	in-H2O		
Part NO.	B / S	V	Hz	WATT	RPM						Kg
CR076	B	230	50 / 60	25 / 25	2850 / 3300	1.6 / 1.8	56 / 64	13.0 / 19.0	0.51 / 0.75	- / -	2.00

*All reading are typical values at rated voltage

*Specifications are subject to change without notice

* Bearing system B: Two Ball Bearing S: Sleeve Bearing

